

VIADANA blocks for sailing dinghies



VIADANA micro-block for ropes up to 5 mm

Made of stainless steel, fitted with black nylon sheave.

Code	Version	Sheave Ø mm	For ropes up to mm	Breaking load kg
55.090.01	Single	17	5	300
55.090.02	Single with becket	17	5	300
55.090.03	Swivel with shackle	17	5	200
55.090.04	Double	17	5	300
55.090.05	Double with becket	17	5	300
55.090.06	Triple	17	5	300
55.090.07	Triple with becket	17	5	300
55.090.08	Footblock (2-screw mounting)	17	5	300
55.090.09	Single with becket and cam	17	5	300
55.090.10	Double with becket and cam	17	5	300
55.090.11	Triple with becket and cam	17	5	300
55.090.20	Optimist-type block	17	5	300
55.090.30	Shackle for 55.090.01/02	17	5	300
55.090.31	Double in-line block	17	5	300



VIADANA Regatta mini-blocks for ropes up to 6 mm

Made of stainless steel, fitted with nylon sheave.

Code	Version	Sheave Ø mm	For ropes up to mm	Breaking load kg
55.040.01	Single	25	6	650
55.040.02	Single with becket	25	6	650
55.040.03	Swivel with shackle	25	6	350
55.040.04	Double	25	6	650
55.040.05	Triple	25	6	650
55.040.06	Single with becket and cam	25	6	650
55.040.07	Double with becket and cam	25	6	650
55.040.08	Triple with becket and cam	25	6	650
55.516.75	Single footblock	25	6	650
55.040.20	Shackle for 55.040.01/02 - 55.042.01/02	25	6	650

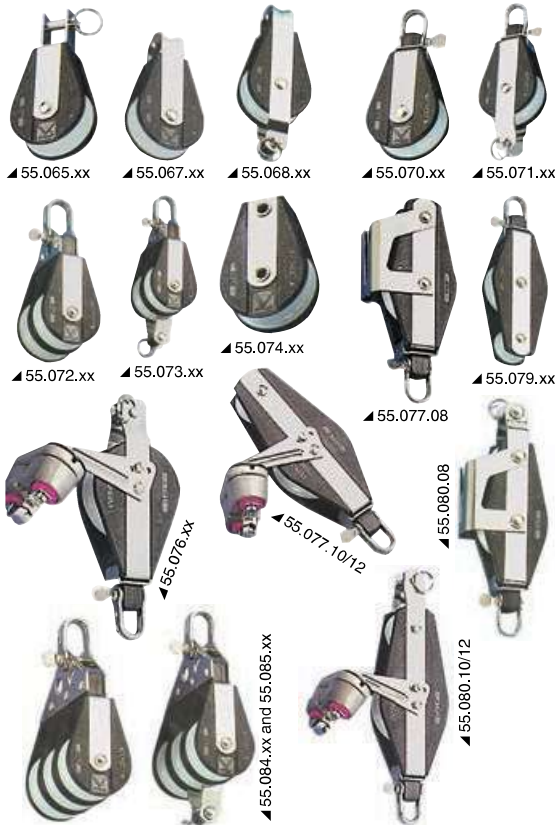




VIADANA Regatta mini-blocks for ropes up to 8 mm

Made of stainless steel, fitted with nylon sheave.

Standard	On ball bearings	Version	Sheave Ø mm	For ropes up to mm
55.042.01	55.043.01	Single	25	8
55.042.02	55.043.02	Single with becket	25	8
55.516.78	-	Single footblock	25	8
55.514.78	-	Single with radiused base	25	8
55.042.03	55.043.03	Swivel head	25	8



VIADANA Wind Speed ball bearing block

Black nylon and stainless steel reinforced model.

Technical features				
Version	For ropes mm	Sheave Ø mm	Breaking load kg	Working load kg
A	8	34	800	300
B	10	45	950	370
C	12	56	1450	580

Model	A	B	C
Single with fixed toggle head	55.065.08	55.065.10	-
Single with fixed head	55.067.08	55.067.10	-
Single with becket and fixed head	55.068.08	-	-
Single with fixed or swivel head	55.070.08	55.070.10	55.070.12
Single with becket and fixed or swivel head	55.071.08	55.071.10	55.071.12
Double with fixed head	55.072.08	55.072.10	55.072.12
Double with becket and fixed head	55.073.08	55.073.10	55.073.12
Single footblock	55.074.08	55.074.10	55.074.12
Single with becket, cam and swivel head	-	55.076.10*	55.076.12*
Double fiddle with cam and swivel head	55.077.08	55.077.10*	55.077.12*
Double fiddle with swivel head	55.079.08	55.079.10	55.079.12
Double fiddle with becket, cam and swivel head	55.080.08	55.080.10*	55.080.12*
Triple with fixed head	55.084.08	55.084.10	55.084.12
Triple with becket and fixed head	55.085.08	55.085.10	55.085.12

* Ball bearing cleats



VIADANA Plastinox control blocks

Made of black nylon, fitted with stainless steel stiffeners.

Technical features				
Version	For ropes up to mm	Sheave Ø mm	Breaking load kg	Working load kg
A	8	34	800	300
B	10	45	950	370
C	12	56	1450	580

Model	A	B	C
Single with fixed head	55.098.00	55.098.01	-
Single with swivel or fixed head	55.100.00	55.100.01	55.100.02
Single with becket and swivel or fixed head	55.101.00	55.101.01	55.101.02
Single with swivel toggle head	55.102.00	55.102.01	-
Double with shackle head	55.104.00	55.104.01	55.104.02
Double with becket and shackle head	55.105.00	55.105.01	55.105.02
Fiddle with swivel or fixed head	55.108.00	55.108.01	55.108.02
Fiddle with becket and swivel or fixed head	55.109.00	55.109.01	55.109.02
Fiddle with cam and swivel or fixed head	55.110.00	55.110.01	55.110.02
Fiddle with becket, cam and swivel or fixed head	55.111.00	55.111.01	55.111.02

VIADANA Delrin ball bearing block

Made of black nylon, fitted with **stainless steel stiffeners**.

Technical features

Version	For ropes mm	Sheave Ø mm	Breaking load kg	Max weight kg
A	6	22	700	100
B	8	28	750	150
C	10	38	950	230
D	12	57	1000	280
E	14	76	2300	800

Type	A	B	C	D	E
Single with fixed head	55.025.06	55.025.08	55.025.10	-	-
Single with swivel toggle and shackle head	55.026.06	55.026.08	55.026.10	-	-
Single with fixed or swivel shackle head	-	-	-	55.026.12	55.026.14
Single with swivel toggle U-shaped head	55.027.06	55.027.08	-	-	-
Single with becket and fixed head	55.028.06	55.028.08	55.028.10	-	-
Single with becket and swivel shackle head	-	55.029.08	55.029.10	55.029.12	-
Double with shackle head	55.030.06	55.030.08	55.030.10	55.030.12	-
Double with becket and shackle head	55.031.06	55.031.08	55.031.10	55.031.12	-
Triple with shackle head	55.032.06	55.032.08	55.032.10	55.032.12	-
Triple with becket and shackle head	55.033.06	55.033.08	55.033.10	55.033.12	-
Triple with carbon ball bearing cam cleat	55.034.06	55.034.08	55.034.10	-	-
Triple with becket and carbon ball bearing cam cleat	55.035.06	55.035.08	55.035.10	-	-
Footblock	55.036.06	55.036.08	55.036.10	55.036.12	-
Single with clamp swivel head for 22/25-mm Ø stanchion or pulpit	55.037.06	55.037.08	-	-	-
Swivel with carbon cam cleat	-	55.039.08	-	-	-
Linked blocks	55.024.06	55.024.08	-	-	-

**Accessories for VIADANA Wind Speed blocks**

Code	Description
55.351.40	Base for mounting universal blocks
55.242.30	Spring to fit between 55.351.40 and head for size 8/10 mm
55.242.50	Washer to fit between the spring and head for 10 mm
55.242.40	Spring to fit between 55.351.40 and head for 12 mm (without washer)
55.541.00	Swivel for coupling 55.076.10 with double and triple blocks
55.541.10	Swivel for coupling 55.076.12 with double and triple blocks
55.242.60	Washer to fit between 55.351.40 and head for 8 mm

**Snap shackle for VIADANA blocks**

Made of cast **stainless steel**, designed to match Wind Speed swivel head blocks and ball bearing blocks.

Code	For blocks mm
55.293.00	10
55.293.10	12



VIADANA composite material ball bearing block

Lightweight yet very sturdy.

Code	Model	For lines mm	Sheave Ø mm	Breaking load kg	Working load kg
55.050.02	1 blocable sheave	12	57	1.080	320
55.056.02	1 sheave with becket and clam cleat (max 8 mm)	12	57	1.080	320
55.056.01	1 sheave with becket and clam cleat in aluminium (max 8 mm)	8	38	600	230
55.049.02	1 swivel sheave	12	57	1.080	320
55.050.01	1 swivel sheave with shackle	10	38	600	230
55.051.01	1 swivel or blocable sheave with becket	10	38	600	230
55.051.02	1 swivel or blocable sheave with becket	12	57	1.080	320
55.059.01	1 flat sheave	10	38	600	230
55.059.02	1 flat sheave	12	57	1.080	320
55.052.01	2 sheaves (universal head)	10	38	600	230
55.052.02	2 sheaves (universal head)	12	57	1.080	320
55.053.01	2 sheaves (universal head) with becket	10	38	600	230
55.053.02	2 sheaves (universal head) with becket	12	57	1.080	320
55.061.01	2 fiddle sheaves	10	38	600	230
55.061.02	2 fiddle sheaves	12	57	1.080	320
55.062.01	2 fiddle sheaves with becket	10	38	600	230
55.062.02	2 fiddle sheaves with becket	12	57	1.080	320
55.064.02	2 fiddle sheaves with becket and clam cleat	12	57	1.080	320
55.064.01	2 fiddle sheaves with becket and clam cleat in carbon	8	38	600	230
55.063.02	2 fiddle sheaves with clam cleat	12	57	1.080	320
55.063.01	2 fiddle sheaves with clam cleat in carbon	8	38	600	230
55.054.01	3 sheaves (universal head)	10	38	600	230
55.054.02	3 sheaves (universal head)	12	57	1.080	320
55.055.01	3 sheaves (universal head) with becket	10	38	600	230
55.055.02	3 sheaves (universal head) with becket	12	57	1.080	320
55.058.02	3 sheaves (universal head) with becket and clam cleat	12	57	1.080	320
55.058.01	3 sheaves (universal head) with becket and clam cleat in carbon	8	38	600	230
55.057.02	3 sheaves (universal head) with clam cleat	12	57	1.080	320
55.057.01	3 sheaves (universal head) with clam cleat in carbon	8	38	600	230
55.065.02	Quadruple block	10	57	1.080	320



VIADANA micro-block

Made of nylon and AISI316 stainless steel.

Code	Version	Sheave Ø mm	For ropes mm	Max height mm	Breaking load kg
55.250.01	Single with fixed head	22	4/6	34	450
55.250.02	Single with becket	22	4/6	34	450
55.250.03	With swivel toggle head	22	4/6	34	450
55.250.04	Footblock (2 fixing bores)	22	4/6	34	450

**VIADANA composite material ball bearing ratchet block for winches**

With stainless steel ball bearings + ratchet. 57-mm Ø sheave, 10-mm max Ø sheet, 900-kg breaking load, 205-kg working load.

Code	Version	Pulley Ø mm	Sheet max Ø mm	Breaking load kg	Work load kg
55.408.00	Single, clockwise rotation	57	10	900	205
55.408.01	Single, anti-clockwise rotation	57	10	900	205

**HYE blocks for sailing dinghies****TUFNOL HYE block**

Technical features

Version	For ropes mm	Tufnol sheave Ø mm	Breaking load kg
A	8	30	800
B	10	35	1000
C	12	43	1500
D	14	50	2000
E	16	60	2500

Model	A	B	C	D	E
Single with fixed head (EO)	55.001.00	55.001.01	55.001.02	55.001.03	-
Single with fixed head (EB)	55.002.00	55.002.01	55.002.02	55.002.03	55.002.04
Single with swivel head (EW)	55.003.00	55.003.01	55.003.02	55.003.03	55.003.04
Single with becket and fixed head (EBH)	55.005.00	55.005.01	55.005.02	-	-
Double with fixed head (TB)	55.006.00	55.006.01	55.006.02	55.006.03	55.006.04
Double with swivel head (TW)	55.007.00	55.007.01	55.007.02	55.007.03	55.007.04
Double with becket and fixed head (TBH)	55.008.00	55.008.01	55.008.02	55.008.03	-
Single with becket and swivel head (EWH)	55.010.00	55.010.01	55.010.02	-	-
Fiddle with swivel head (ZBW)	55.011.00	55.011.01	55.011.02	-	-
Single footblock (3-screw mounting) (LB)	55.012.00	55.012.01	55.012.02	55.012.03	55.012.04
Fiddle with becket and cam (ZBK)	56.101.08	56.101.10	56.101.12	-	-



VIADANA, SEA SURE and PFEIFFER footblocks and wire blocks



VIADANA small block

Stainless steel vertical bracket.

Code	Sheave	Sheave Ø mm	For ropes mm
55.063.04	Nylon	25	4
55.063.06	Nylon	25	6
55.063.08	Nylon	25	8
55.063.25	Aluminium	25	up to 2.5
55.063.40	Aluminium	25	up to 4



VIADANA blocks and footblocks

Made of stainless steel, for recess-fit on mast or deck, fitted with nylon sheave for textile halyards.

Code	No of sheaves	Sheave Ø mm	For ropes up to mm	Breaking load kg
55.241.01	1	38	8	700
55.241.11*	1	38	8	700
55.038.06	1	22	6	700
55.038.08	1	28	8	750
55.240.02	1	55	12	800
55.240.03	2	25	8	560
55.240.04	2	33	10	600

* With radiused base



VIADANA horizontal-mounting footblock

25-mm Ø nylon sheave.

Code	For ropes mm
55.511.75	5
55.511.78	8



VIADANA movable wire block

Stainless steel flat model fitted with 25-mm Ø nylon sheave. For steel cables.

Code	For cables mm	Version
55.511.73	2,5	Single
55.512.74	4	Single



VIADANA Plastinox wire block

Made of black nylon and stainless steel, fitted with hard anodized aluminium sheave, for steel cables, with fixed or swivel head.

Code	Sheave Ø mm	For cables up to mm	Breaking load kg
55.099.00	34	4	700
55.099.02	55	6	1450



VIADANA recess-fit blocks for wire cables

Made of stainless steel, for recess-fit on mast or deck, fitted with aluminium sheave, for wire ropes.

Code	No of sheaves	Sheave Ø mm	For wire ropes up to mm	Breaking load kg
55.241.03	1	40	5	700
55.241.04	1	22	3	500
55.241.06	1	28	4	500
55.240.05	1	34	5	700



VIADANA vertical pivoting footblock

Stainless steel body.

Code	Sheave	Sheave Ø mm	For ropes mm
55.082.01	Delrin on ball bearings	22	6
55.082.02	Delrin on ball bearings	28	8
55.082.10	Aluminium	25	4
55.082.11	Aluminium	28	4

VIADANA vertical footblock

Stainless steel body.

Code	Type	Sheave	Sheave Ø mm	For ropes mm
55.063.50	Single	Delrin on ball bearings	22	6
55.063.51	Double	Delrin on ball bearings	22	6
55.063.52	Single	Delrin on ball bearings	28	8
55.063.53	Double	Delrin on ball bearings	28	8
55.063.60	Single	Aluminium	25	4
55.063.61	Single	Aluminium	28	4

**VIADANA pivoting footblock**

Stainless steel body.


Code	For ropes mm	Base mm	Sheave	
			material	Ø mm
55.081.01	10/12	83x42	nylon	55

**SEA SURE footblock for furling systems**

Made of mirror-polished stainless steel.

Code	For stanchion Ø mm	For sheets up to
55.508.00	25	12

**VIADANA footblock for furling systems**It keeps the sheet on the **outer part** of the deck. The **large** diameter **Delrin ball bearing** sheave makes furling the jib easier while it usually requires great efforts.

Code	Sheave Ø mm	For sheets up to mm	Central hole mm	Working load kg	
55.502.00	57	12	25,8	280	120

**Footblock for furling system**

- A) Made of nylon, completely **articulated** on two axes.
 B) Made of nylon, with stainless steel sheet passage.

Code	Sheave Ø mm	For sheets up to mm	For stanchion Ø mm	Rope passage max Ø mm	Version
55.503.00	24	10	25	-	A
55.504.00	-	-	25	12	B

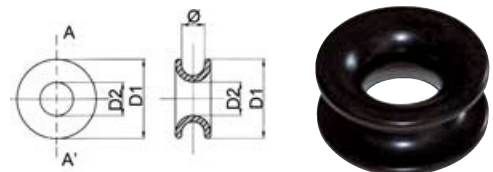
**PFEIFFER recess fit aluminium block**Made of **black aluminium**, fitted with **aluminium** sheave, for textile or metal halyards

Code	mm	Sheave Ø mm
55.708.40	107x47x33	40x12

**Low-friction ring**

Made of self-lubricating hard-anodized light alloy. Ideal as block, guide ring, strong point, lazy jack, barber hauler, etc. For accurate adjustments.

Code	D1 mm	D2 mm	Ø mm
58.197.13	13	5	3
58.197.19	19	7	5
58.197.25	25	10	7
58.197.35	35	14	10



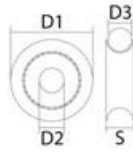
Sheaves for blocks



▲ 55.244.01



▲ 55.244.02/03/04/05



Delrin® sheave with stainless steel caps and ball bearings

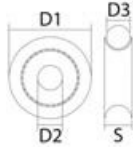
Code	D1 mm	D2 mm	D3 mm	S mm	Colour
55.244.01	20	5,3	8	12,3	White
55.244.02	28	5,3	8	11,0	Black
55.244.03	28	5,3	10	14,6	Black
55.244.04	38	8,8	12	20,6	Black
55.244.05	44	8,8	14	21,9	Black



▲ 55.245.01

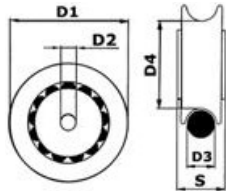


▲ 55.245.02/03/04/05/06



Delrin® sheave

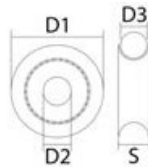
Code	D1 mm	D2 mm	D3 mm	S mm	Colour
55.245.01	17	6,2	5	7	Black
55.245.02	28	8,2	10	13,4	White
55.245.03	34	8,2	8	10,5	White
55.245.04	34	12,2	12	17,6	White
55.245.05	45	12,2	10	13,5	White
55.245.06	56	12,2	12	17,6	White



Nylon sheave on Delrin® ball bearings

To be used by locking the central hub fitted with a hole. The sheave rotates on the ball ring thus minimizing friction.

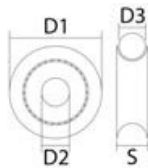
Code	D1 mm	D2 mm	D3 mm	D4 mm	S mm	Working load kg
55.243.01	29	5,1	8	22	12,5	130
55.243.02	38	5,1	10	29	15,9	190
55.243.03	57	6,1	12	46	19,8	240



Aluminium sheave

Hard anodizing + PTFE, with plastic insert.

Code	D1 mm	D2 mm	D3 mm	S mm	Colour
55.246.01	28	8,2	4	10,2	Black
55.246.02	34	8,2	5	13,6	Black



Stainless steel sheave

With plastic insert.

Code	D1 mm	D2 mm	D3 mm	S mm
55.247.01	16	5,2	5 textile; 2,5 SS	6,4