

U-bolts

OSCULATI

Rapid Lock system for fenders and bimini tops

AISI 316

FLUSH

Quick coupling/release system for fast fastening of fenders, Bimini tops, etc.

Made of AISI316 stainless steel. When not in use, the recess base is flush with the surface.

Fitted with Dyneema ring for fastening to the fender/Bimini top.



▲39.840.00



▲39.840.01



▲39.840.10



▲39.840.61



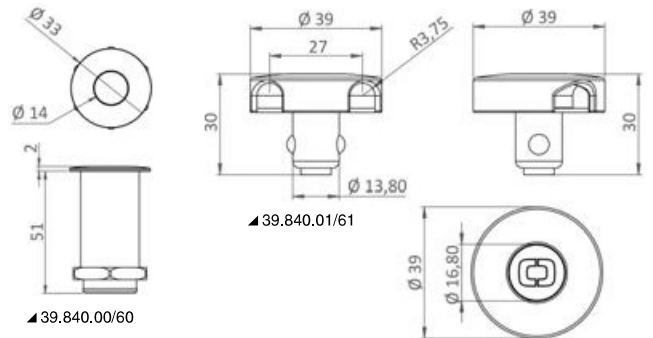
▲39.840.60



Polished SS version	Black SS version	Description	mm
39.840.00	39.840.60 New	Base Rapid Lock	Ø 33 x 53 h
39.840.01	39.840.61 New	Removable part	Ø 39 x 30 h
39.840.10	39.840.10	Loop ring grey Dyneema	Ø 7



▲39.840.60/61

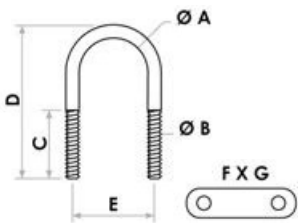


OSCULATI

U-bolt with two plates

AISI 316

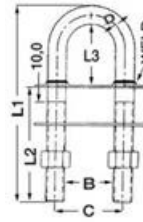
Made of stainless steel.



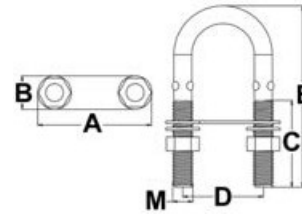
Code	Length D mm	Plate FxG mm	Thread length C mm	U Ø A mm	Thread Ø B mm	Centre distance E mm	ORDER BY BOX
39.125.07	80	50x15	39	7	5	35	5
39.125.06	90	50x15	45	8	6	35	5
39.125.01	105	55x15	60	10	8	35	5
39.125.02	105	55x15	60	10	8	35	5
39.125.03	110	63x15	65	10	8	45	5
39.125.04	110	63x15	64	10	8	45	5
39.125.00	135	70x20	75	12	10	55	5
39.125.05	155	100x25	92	14	12	65	5

De Luxe U-bolt for conic fittings.**AISI 304** Made of mirror-polished stainless steel.

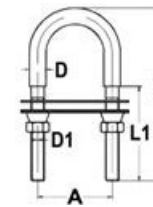
Code	D mm	L1 mm	L2 mm	L3 mm	B mm	C mm	Breaking load kg
39.127.01	9,5	100	63	27,5	26,1	35,7	7826
39.127.02	9,5	120	83	27,5	26,1	35,7	7826
39.127.03	9,5	110	63,5	35	26,1	35,7	7826
39.127.05	12,5	122	76	34	34	46	9000
39.127.06	12,5	136	90	34	34	46	9000
39.127.10	New 12,5	166	120	34	34	46	9000
39.127.07	12,5	131	76,2	41	34	46	9000
39.127.09	15,8	167	91	50	45	58	11000
39.127.14	New 15,8	207	130	50	47,5	60	11000

OSCULATI**U bolt made with rod**Made of **AISI304** stainless steel.

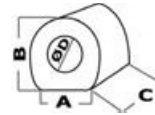
Code	A mm	B mm	C mm	D mm	E mm	M mm	ORDER BY BOX	Breaking load kg
39.126.01	45	12	30	30	60	M4	10	1100
39.126.02	50	13	40	36	80	M5	10	1900
39.126.03	50	15	40	36	90	M6	10	2700
39.126.04	50	15	40	36	80	M8	10	4000
39.126.05	70	20	55	52	90	M10	10	6600
39.126.06	83	23	65	62	150	M12	-	11000

**U-bolt with self-gripping safety nut****AISI 316** Made of stainless steel.

Code	D1	L1 mm	L mm	D mm	A mm
39.123.01	M8	60	100	10	40
39.123.02	M10	48	100	12	40
39.123.03	M12	58	120	14	50

**Eyebolts and rings****Towing/hoisting rings****AISI 316** Made of mirror polished AISI316 stainless steel.

Code	A mm	B mm	C mm	D Ø mm	Mounting with
39.200.01	38	35	15.6	21	2 x 5-mm studs
39.200.02	50	45	19.7	30	2 x 8-mm studs

**Pulling/holding ring**Made of **chromed bronze**.

Code	Pin mm	Weight kg
39.119.00	10x90	210

Pulling/holding ringMade of **chromed bronze**, fitted with two studs.

Code	base mm
39.118.00	100x43

Bow or stern ring, made of polished stainless steel AISI 316

Code	Studs mm	Working load kg
39.116.00	10	1100

**Stainless steel spring-locking ring**

39.147.00 Designed as hook for water-ski line haul, dinghies or small boats; sturdy and practical.

Multi-purpose ring

AISI 316 stainless steel.

Code	Base mm	Overhang mm
39.301.07	30x27	28



Double eyebolt for dinghy stern mounting

Code	Material	pin Ø mm	Length mm	round ring Ø mm
39.170.91	S.S	8	60	8
39.170.92	S.S	10	80	10



Eyebolts

Made of mirror polished **AISI 316 stainless steel** press-forged without welded parts; maximum sturdiness and reliability.

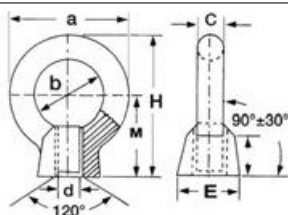
Code	E mm	A mm	B mm	C mm	D mm	ORDER BY BOX
39.181.01	6	40	34	5	12	10
39.181.02	6	60	54	5	12	10
39.181.04	8	100	90	6	14	10
39.181.05	10	100	88	8	16	10
39.181.06	12	120	105	10	18	10



Eyebolts

Made of press-forged **AISI 316 stainless steel**, very sturdy and practical.

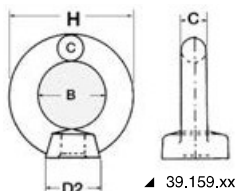
Code	Pin	Length mm
39.182.01	6 MA	60
39.182.02	8 MA	80



Threaded eyebolts

Made of mirror-polished **AISI 316 stainless steel**, with thread.

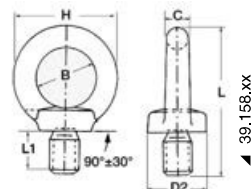
Code	a mm	b mm	c mm	E mm	M mm	H mm	Thread d mm	9
39.306.06	26	16	5	13	13	28,3	M 6	45
39.306.08	32,6	20	6,3	16	17	33,3	M 8	80
39.306.10	41	25	8	20	21	41,5	M 10	150
39.306.12	50	30	10	25	26	51	M 12	220



Eyebolt

With cast AISI316 stainless steel eye.

Female	Male	Breaking load kg	Thread C mm	B mm	H mm	L mm	L1 mm	D2 mm	9
39.159.06	39.158.06	1300	M 6	16	28	41	13	17	10
39.159.08	39.158.08	1450	M 8	20	36	48	13	20	10
39.159.10	39.158.10	2000	M 10	25	45	62	17	25	10
39.159.12	39.158.12	2800	M 12	30	54	75	21	30	10
39.159.16	39.158.16	5850	M 16	35	63	90	27	35	10



Swivel ring with pin

Made of **chromed brass**.

Code	ring Ø mm	pin Ø mm
39.170.60	45	3/8
39.170.61	50	1/2

Swivel ring with stainless steel pin



Made of **stainless steel**.

Code	Ø mm	Length under the head mm
39.170.62	10	55

Swivelling ring



Made completely with **chromed bronze**.

Code	Ring Ø mm	Plate mm
39.170.70	35	40x30

Ring with screws



Made of **chromed bronze**, very sturdy.

Code	mm
39.580.00	50x30x25

Ring with stud



Made of **chromed brass**, sturdy and elegant.

Code	mm
39.580.01	80x35x25

Rings for mounting fenders or for general use

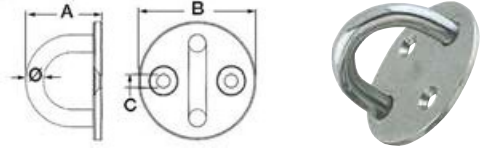
Made of polished AISI 316 stainless steel.

Code	Eye Ø mm	Base mm	Altezza mm
39.167.01	13	32x26	24
39.167.02	22	46x38	38

**2-hole plate with U-bolt**

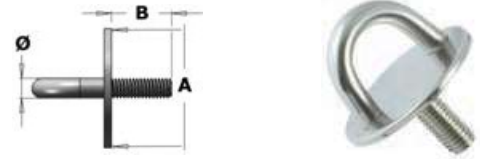
Made of polished stainless steel.

Code	Ø mm	A mm	B mm	C mm	ORDER BY BOX
39.323.01	5	20.5	33	4.5	10
39.323.02	6	25.5	40	4.5	10
39.323.03	8	31	50	5.5	5

**Plate with U-bolt and stud**

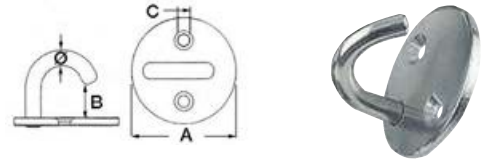
Polished stainless steel

Code	Ø mm	A mm	B mm	Thread mm	ORDER BY BOX
39.325.01	5	32	20	M6	10
39.325.02	6	40	22	M8	5
39.325.03	8	50	26	M10	5

**Round plate hooks**

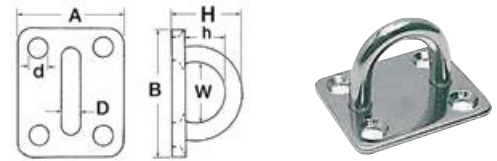
Made of polished stainless steel.

Code	Ø mm	A mm	B mm	C mm	ORDER BY BOX
39.324.01	5	33	8,5	4,5	10
39.324.02	6	40	12,5	4,5	10
39.324.03	8	50	14,5	5,5	5

**Rectangular plates fitted with ring**

Made of stainless steel.

Code	D mm	A mm	B mm	H mm	h mm	W mm	d mm	g
39.320.05	5	30	35	19	12	14	4,2	29
39.320.06	6	35	40	26	17	18	4,2	40
39.320.08	8	40	50	33	22	20	5,2	70
39.320.10	10	48	60	40	30	25	5,5	100

**Extra-strong precision-cast eyebolt**

Made of investment cast mirror polished AISI 316 stainless steel, fitted with 4 screws; used as strength point in deck or for heavy-duty use.

Code	Length mm	Width mm	Eye mm
39.168.40	79	49	20x10
39.169.40	88	55	28x12

**Precision-cast eyebolt**

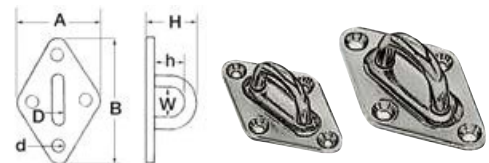
Made of investment cast mirror polished AISI 316 stainless steel, fitted with 2 screws.

Code	Length mm	Eye Ø mm	g
39.168.41	75	16	60
39.169.41	90	20	110

**Plate bridge rings**

Made of stainless steel, fitted with 4 holes.

Code	D mm	A mm	B mm	H mm	h mm	W mm	d mm	g
39.132.05	5	37	59	22	12	11	4,2	32
39.132.06	6	40	64	26	15	15	4,2	44
39.132.08	8	50	80	33	20	18	5,2	77

**Semi-recessed eyebolts**

39.169.00 Made of AISI 316 stainless steel. Semi-recessed version for better sliding of the line.



Pad-Eye foldable rings

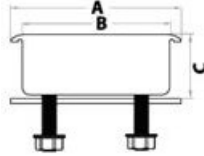


FLUSH DECK power point

AISI 316

High-resistance power point suitable to fasten rafts, inflatables, etc. on deck or platforms, or to fasten lifelines or other on sail boats. Mirror polished AISI 316 stainless steel.

Code	A mm	B mm	C mm	Breaking load kg
39.865.00	70	60	21	1100



Electro-polished foldable half-rings

Very thick (2,85 mm) stainless steel plate and counterplate (1,42 mm).

Code	Base mm	Ring section mm	Ring mm
39.868.06	58x50	6	51x39
39.868.08	58x50	8	56x43

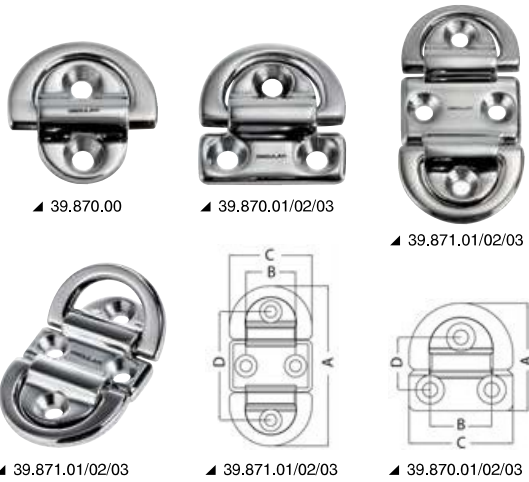


Foldable stainless steel rings

AISI 316

Also designed as strength points; **AISI 316** stainless steel base, excellent corrosion resistance, it can bear heavy loads, vibration-dampening rubber washers.

Code	Base mm	Breaking load kg
39.866.80	with 3 holes 48x49	1500
39.866.81	with 3 holes 65x64	2200
39.866.85	Depresses bollard, 48x49	1500
39.866.86	with 4 holes 45x45 mm	900
39.866.87	with 4 holes 51x5 mm	1500
39.866.88	with 4 holes 76x76 mm	3000



Folding pad eyes with HR forged eye

AISI 316

Mirror-polished pad eyes with full forge eye for maximum mechanical strength. Fitted with anti-vibration rubber.

FORGE RING

It comes in a recyclable display package showing breaking load values. Same centre distance as Wichard having similar dimensions.

Code	Type	mm				Eye section Ø mm	Screw Ø mm	Breaking load kg
		A	B	C	D			
39.870.00	Single, small, 2 bores	46	-	45	23	6	6	1800
39.870.01	Single, small	47	27	45	25	6	6	2200
39.870.02	Single, medium	61	35	59	30	8	6	4000
39.870.03	Single, large	77	46	75	40	10	6	7000
39.871.01	Double, small	87	27	45	60	6	6	3600
39.871.02	Double, medium	99	35	59	60	8	6	6800
39.871.03	Double, large	126	45	75	79	10	6	12000



Square pad eyes with HR folding forged eye

AISI 316

Mirror-polished square pad eyes with full forge eye for maximum mechanical strength. Fitted with anti-vibration rubber.

FORGE RING

It comes in a recyclable display package showing breaking load values. Same centre distance as Wichard having similar dimensions.

Code	Type	mm				Ring section Ø mm	Breaking load kg
		A	B	C	D		
39.873.01	Square Small	57	27	45	23	6	2700
39.873.02	Square Medium	75	35	60	30	8	5100

Folding pad-eye and plate, two boresMade of high strength polished **stainless steel** (17-PH4).

Code	Base mm	Ring section Ø mm	Breaking load kg
39.869.01	28x54	6.8	1500
39.869.02	45x66	9.2	2200

**Folding pad-eye and plate**

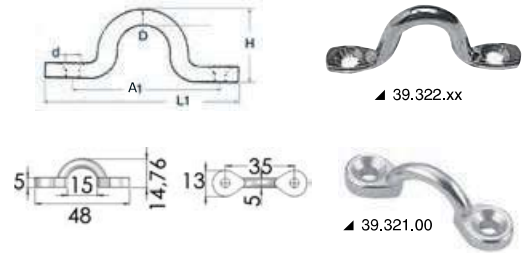
Fitted with forged polished AISI 304 steel supports.

Code	Base mm	Ring section Ø mm
39.868.01	28x12	3
39.868.02	51x32	6
39.868.03	68x38	8

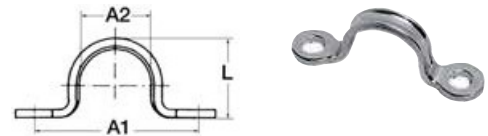
**Jumpers****Stainless steel flush-mount eye bridge**Made of **stainless steel**, forged and polished.

Code	D mm	L1 mm	H mm	A1 mm	d mm	ORDER BY BOX
39.322.04	4	42	15	32	3,8	10
39.322.05	5	50	18	37	4,5	10
39.322.06	6	61	22	46	5,6	20
39.322.08	8	67	25	49	6,9	20
39.322.10	10	84	28	61	9,3	10
39.321.00*	5	48	15	35	4,8	10

* Microcast model

**Forged eye bridges with central rib**Made of **stainless steel** plate.

Code	A1 mm	A2 mm	L mm	Holes Ø mm	ORDER BY BOX
39.176.74	28	11	12	4	10
39.176.75	34	15	14	5	10
39.176.76	44	20	19	5	10
39.176.77	63	28	28	5	10
39.176.78	67	32	33	6	10

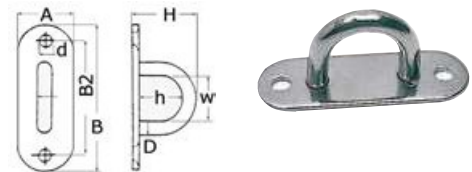
**Stainless steel plate eye bridge**

Made of polished AISI 316 stainless steel plate.

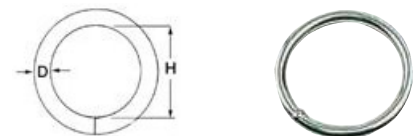
Code	A mm	H mm	C mm	Plate thickness mm	ORDER BY BOX
39.319.01	43	11	11	1,2	10
39.319.00	47	14	11	1,2	10

**Eye bridges with flat base**Made of polished **stainless steel**.

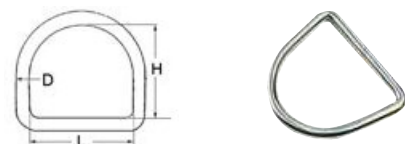
Code	D mm	A mm	B mm	B2 mm	H mm	h mm	W mm	d mm	ORDER BY BOX
39.002.00	5	16	45	38	20	13	15	5	10
39.003.00	6	20	60	46	25	17	16	5,2	10
39.004.00	8	26	80	55	32	21	20	5,2	10
39.005.00	10	36	100	73	35	25	22	6,5	10

**Stainless steel Rings, Triangles and D-Rings****Round ring**

Code	D mm	H mm	ORDER BY BOX	Code	D mm	H mm	ORDER BY BOX
39.595.00	4	20	10	39.598.02	6	60	5
39.597.00	5	30	10	39.595.99	8	40	5
39.597.01	5	25	10	39.596.00	8	50	5
39.597.02	5	35	10	39.596.01	8	60	5
39.597.05	6	30	10	39.596.03	10	60	-
39.598.00	6	40	10	39.596.05	10	80	-
39.598.01	6	50	10				


**D-Ring**

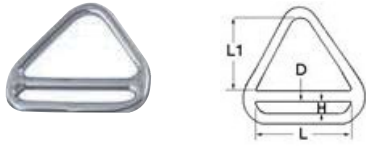
Code	D mm	L mm	H mm	ORDER BY BOX
39.599.20	5	25	22	10
39.599.30	6	30	27	10
39.599.40	6	40	37	10
39.599.50	6	50	47	10
39.599.80	8	50	47	10






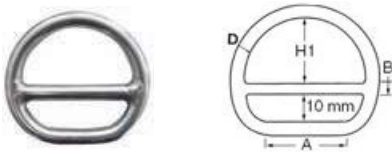
Triangle for sail ties

Code	D mm	L mm	
39.599.99	4	20	10
39.600.00	5	30	10
39.600.01	5	45	10
39.600.02	6	50	-
39.600.03	8	50	-



Triangle with bar for sail ties

Code	D mm	L mm	H mm	L1 mm	
39.601.01	5	45	5,5	40	5
39.601.02	6	50	7	45	5
39.601.03	8	50	8	45	5



Semi-circle with bar for sail ties

Code	D mm	A mm	B mm	H1 mm
39.602.01	5	45	10	25
39.602.02	6	50	10	28
39.602.03	8	50	10	28
39.602.04	10	60	12	32

ROPEYE textile loops



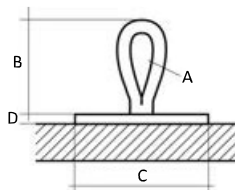
▲39.811.01

▲39.810.02

▲39.810.01

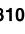


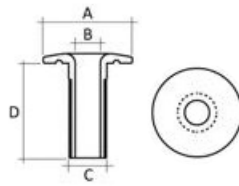
▲39.811.02



ROPEYE XXS/XS stick-on textile loop

Ropeye has two different types of XXS loops: carbon & glass fibre. The loops are used as stick-on's on a sanded surface to glue the loops to. For elastic gluing: SIKAFLEX 291i 65.289,XX. Ideal as inside fitting to organize equipment without the need to drill holes for installation.

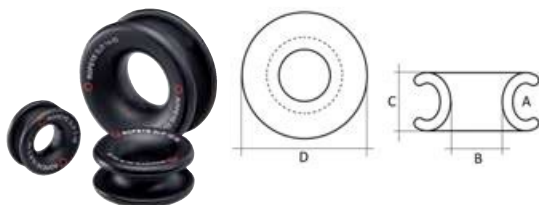
Code	Ropeye Code	Material	Rope (A) mm	Ring (B) mm	Base-Ø (C) mm	Width (D) mm	Weight g	Breaking loag kg
39.810.01	ROXXS-C	 Carbon fibre	3	20	30	3	3,0	75
39.810.02	ROXXS-GF	 Glass fibre	3	20	30	3	3,0	75
39.811.01	ROXS-C	 Carbon fibre	3	30	40	3	5,9	150
39.811.02	ROXS-GF	 Glass fibre	3	30	40	3	5,9	150



ROPEYE TDP stick-on bushing for lines

Ropeye Through Deck Pushing is designed to protect the deck in the making of any thru-deck application for lines, halyards and sheets.

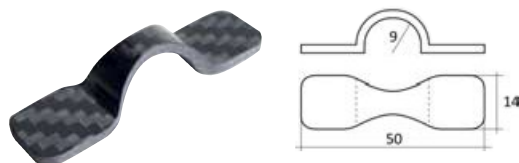
Code	Ropeye Code	Material	Head-Ø (A) mm	Inside Ø (B) mm	Outside Ø (C) mm	Length (D) mm	Weight g
39.817.01	ROTDP12	Anodised aluminium	28	8	12	30	8,2
39.817.02	ROTDP14	Anodised aluminium	30	10	14	30	10
39.817.03	ROTDP16	Anodised aluminium	32	12	16	30	11,5
39.817.04	ROTDP18	Anodised aluminium	34	14	18	30	12,3



ROPEYE SLR low-friction rings

Ropeye Self-Locking Rings are low-friction rings for indoor and outdoor applications. Made of anodised aluminium, they are specially designed to let lines, halyards and sheets slide inside the ring channel.

Code	Ropeye Code	Material	Outside (A) mm	Inside (B) mm	Width (C) mm	Ring (D) mm	Weight g	Breaking load kg
39.819.01	ROSLR7-10	Aluminium	7	10	11	24	5	800
39.819.02	ROSLR10-14	Aluminium	10	14	15	34	13	1600
39.819.03	ROSLR14-20	Aluminium	14	20	20	46	30	3200
39.819.04	ROSLR20-28	Aluminium	20	28	31	70	120	6400
39.819.05	ROSLR28-38	Aluminium	28	38	44	99	290	10000



ROPEYE Eyestrapp

Ropeye Eyestrapp is a inside fastening point easy to install and very compact in size. For elastic gluing: SIKAFLEX 291i 65.289,XX.

Code	Ropeye Code	Material	Radius mm	Length mm	Width mm	Weight g	Breaking load kg
39.822.00	ROSOE	Carbon	9	50	14	2	35