

LOWRANCE®

Price Book 2012



www.lowrance.com

Welcome to the Lowrance 2012 Price Book

For more than 50 years, Lowrance has been a world leading brand in maritime electronics for the fishing and power boating market. Over the years, Lowrance has developed a complete range of innovative high performance products that are affordable and easy to use.

Price Book Contents

Below is a list showing each section of the Price Book and the products listed within each section.

HDS High Definition System

HDS-10, HDS-8, HDS-7, HDS-5
HDS-10m, HDS-8m, HDS-7m, HDS-5m
HDS-5x
Expand your HDS

StructureScan™ Sonar Imaging

LSS-1

Marine Audio Server

SonicHub™

Broadband Radar™

Broadband 3G Radar

High Definition Digital Radar

LRA-Series, TX06L-1

Automatic Identification System

NAIS-300

Elite and Mark Series

Elite-5 DSI, Elite-5x DSI, Mark-5x DSI, Mark-5x DSI Portable
Elite-5, Elite-5m. Elite-5x, Mark-5x PRO, Mark-5x, Mark 5x
Portable

X and M Series

X-67c, X-59 DF, X-52, M-52i
X-4, X-4 Pro, X-4 Portable

VHF Communications

LVR-880, LVR-250, LHR-80

Digital Gauges

LMF-400, LMF-200, LST-3800

Outdoor GPS Navigation

Endura™ Series - Sierra, Safari, Out&Back

Eagle Displays

Eagle Cuda® 350i
Eagle FishEasy® 350c

Legacy Accessories and Spares

Contacting Navico:

CUSTOMER SUPPORT:

Phone: [\[enter phone number here\]](#)

Email: [\[enter email address here\]](#)



DEALER/DISTRIBUTOR SUPPORT:

Phone: [\[enter phone number here\]](#)

Email: [\[enter email address here\]](#)



ORDER MANAGEMENT:

Phone: [\[enter phone number here\]](#)

Email: [\[enter email address here\]](#)



Using the Lowrance Price Book

The 2012 price book is designed to be a comprehensive guide to all products, accessories and spare parts. You will find the associated accessories and spare parts positioned near the main products for ease of use.

Product Section

HDS High Definition System

LOWRANCE

Product Name and Introduction

HDS Multifunction Fishfinder

A brief introduction summarizing the product or product range.

The legendary Lowrance X-series lives on in this next-generation advancement in fishing for the serious and professional angler. Its exceptionally enhanced features and performance are precisely revealed on a high-definition 5.7/12.7 cm 256-colour SolarMAX™ PLUS display with adjustable screen and keypad backlighting. Best of all, Lowrance Broadband Sounder™ is now built-in.

Main Features

Unique selling points for the product or product range.

HDS
HIGH DEFINITION SYSTEM

Main Features

- Built-in Broadband Sounder™
- Brilliant, New SolarMAX™ PLUS Display
- Revolutionary ethernetworks add-ons: BR24 Broadband Radar and HD Digital Radomes, and - new for 2010 - LSS-1 StructureScan sonar
- NMEA 2000® Networking
- Expanded two-year warranty

Product Image

An image showing the specified product.



Model Pictured

HDS-5x

Main Products

The primary line of Lowrance products associated with this model range.

Main Products

Part Number	Barcode	Description	Price (1)	Price (2)
Grouping				
000-0000-000	0 00000 00000 0	Main product description	\$311.00	\$311.00
000-0000-000	0 00000 00000 0	Main product description	\$311.00	\$311.00

Accessories

Items that can be used with or added to the main products.

Accessories

Part Number	Barcode	Description	Price (1)	Price (2)
Grouping				
000-0000-000	0 00000 00000 0	Accessory description	\$311.00	\$311.00
000-0000-000	0 00000 00000 0	Accessory description	\$311.00	\$311.00
000-0000-000	0 00000 00000 0	Accessory description	\$311.00	\$311.00
000-0000-000	0 00000 00000 0	Accessory description	\$311.00	\$311.00

Spare Parts

Replacement parts for main products.

Spare Parts

Part Number	Barcode	Description	Price (1)	Price (2)
Grouping				
000-0000-000	0 00000 00000 0	Spare part description	\$311.00	\$311.00
000-0000-000	0 00000 00000 0	Spare part description	\$311.00	\$311.00
000-0000-000	0 00000 00000 0	Spare part description	\$311.00	\$311.00
000-0000-000	0 00000 00000 0	Spare part description	\$311.00	\$311.00

Price Effective Date

These prices effective as of: January 1st 2010

LHDS01

Page version 1.0

Unique Page Code

Use this code when referring to a specific page in the Price Book. The footer also contains a version number.

HDS Multifunction Fishfinder/GPS Chartplotter

Top-of-the-line Lowrance fishfinder and GPS Chartplotter combined into one brilliant display. Built-in Broadband Sounder™ shows deeper depths, crystal-clear targets, and up to 120-degree coverage with optional 83 kHz operation. A highly accurate internal antenna provides precise location even when head unit is flush-mounted. Exclusive optional built-in mapping with contour shading displays a lifelike presentation of the bottom topography. Compatible with the full range of Navionics products, including Platinum+, along with Turbo Viewer for enhanced 3D viewing. HDS-8 and HDS-10 models feature a flywheel control dial and one-touch soft keys that allow easier and quicker control. HDS-7, HDS-8 and HDS-10 models have super bright white backlit LED displays to enhance visibility in all lighting conditions.



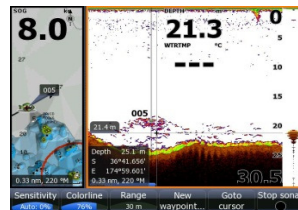
HDS HIGH DEFINITION SYSTEM

Main Features

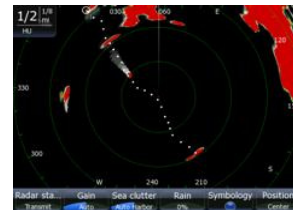
- Internal high-sensitivity GPS+WAAS / EGNOS/ MSAS antenna
- Built-in Broadband Sounder™
- SolarMAX™ PLUS high resolution displays for sunlight viewability
- Built-in Navionics background map
- Mapping options include Navionics® Platinum+
- Ethernet Add Ons: LSS-1 StructureScan™ sonar imaging, Broadband Radar™ HD Digital Radars.
- NMEA 2000® networking
- Software enhancements for Broadband Radar™ navigation: Fast Scan rotation rate, MARPA, Guard zones.
- Digital switching integration
- Two-year limited warranty



Gauges information page



Sonar rewind feature



Target being tracked almost off the screen with dotted history. Easy to see a fast moving boat approaching.

Main Products

Part Number	Barcode	Description	RRP
HDS-10			
000-0140-03	0 42194 53292 9	HDS-10 no transducer - 10.4" combination chartplotter/fishfinder with worldwide background map, no transducer	€ 2,642.19
HDS-8			
000-0140-08	0 42194 53297 4	HDS-8 no transducer - 8" combination chartplotter/fishfinder with worldwide background map, no transducer	€ 1,999.00
HDS-7			
000-0140-37	0 42194 53326 1	HDS-7 no transducer - 6.4" combination chartplotter/fishfinder with worldwide background map, no transducer	€ 1,099.00
HDS-5			
000-0140-01	0 42194 53311 7	HDS-5 83/200 - 5" combination chartplotter/fishfinder with worldwide background map, 83/200 kHz Skimmer® transducer	€ 699.00
000-0140-43	0 42194 53374 2	HDS-5 50/200 - 5" combination chartplotter/fishfinder with worldwide background map, 50/200 kHz Skimmer® transducer	€ 848.37
000-0140-33	0 42194 53322 3	HDS-5 no transducer - 5" combination chartplotter/fishfinder with worldwide background map, no transducer	€ 737.54

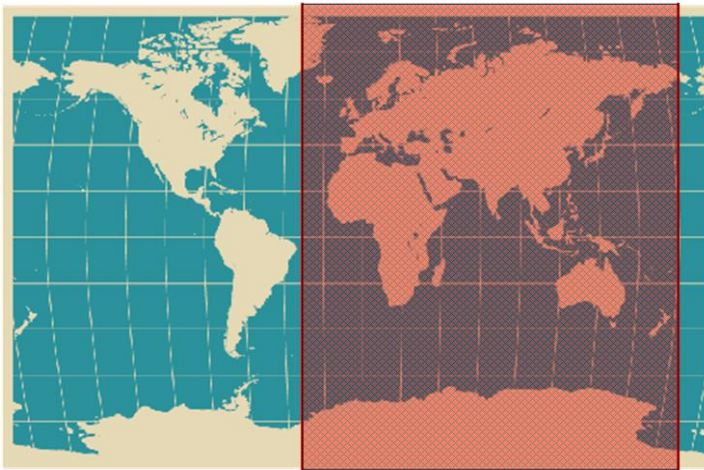
HDS Multifunction Fishfinder/GPS Chartplotter

IMPORTANT NOTE TO RESELLERS ABOUT RESTRICTED OPERATION OUTSIDE OF THE AMERICAS FOR SELECTED HDS MODELS

Units designed for sale in the Americas will have limited language and functionality outside of a zone defined as 30 degrees West longitude on the East and the International Date Line on the West. Language options will be restricted to English (US) only, and functionality will be restricted to non-metric measures.

All GPS-capable units sold with Enhanced US Basemap, Nautic Insight™, Lake Insight™ or Insight USA™ units are affected and will have restricted functionality outside of this defined region. GPS-capable units sold with the WorldWide Basemap will function without these restrictions worldwide.

ALL MODELS SOLD IN THE AMERICAS ARE SUBJECT TO THE GEO-FENCE RESTRICTION



Area in red indicates restricted operation of America's units.

SKU's with RESTRICTED WORLDWIDE OPERATION

SKU	DESCRIPTION
000-0140-00	HDS-10 BASE US 83/200KHZ
000-0140-02	HDS-10 INSIGHT USA 50/200KHZ
000-0140-05	HDS-7 BASE US 83/200KHZ
000-0140-06	HDS-8 INSIGHT US 50/200KHZ
000-0140-07	HDS-8 INSIGHT USA 83/200KHZ
000-0140-09	HDS-8 BASE US 83/200KHZ
000-0140-12	HDS-7 INSIGHT USA 83/200KHZ
000-0140-13	HDS-10 INSIGHT USA 83/200KHZ
000-0140-14	HDS-7 INSIGHT USA 50/200KHZ
000-0140-15	HDS-10M INSIGHT USA
000-0140-16	HDS-7M INSIGHT ALL US 8GB CE
000-0140-17	HDS-8M INSIGHT USA
000-0140-19	HDS-5 LAKE INSIGHT 83/200KHZ
000-0140-20	HDS-5 NAUTIC INSIGHT 50/200KHZ
000-0140-21	HDS-5 BASE US 83/200KHZ
000-0140-22	HDS-5 BASE US OEM 6PK
000-0140-23	HDS-5M NAUTIC INSIGHT
000-0140-26	HDS-5 BAJA CE
000-0140-30	HDS-5 LAKE INSIGHT W/O XD
000-0140-31	HDS-5 NAUTIC INSIGHT W/O XD
000-0140-32	HDS-5 BASE US W/O XD
000-0140-34	HDS-7 BASE US W/O XD
000-0140-36	HDS-7 INSIGHT USA W/O XD
000-0140-38	HDS-8 BASE US W/O XD
000-0140-39	HDS-8 INSIGHT USA W/O XD
000-0140-40	HDS-10 BASE US W/O XD
000-0140-41	HDS-10 INSIGHT USA W/O XD

HDS Multifunction GPS Chartplotter

Lowrance presents a new dimension in multifunction chartplotters. The SolarMAX™ PLUS high resolution displays provide brilliant detail in sunlight with the best wide-angle viewing available.



Main Features

- Internal high-sensitivity GPS+WAAS / EGNOS/ MSAS antenna
- SolarMAX™ PLUS high resolution displays
- Built-in Navionics background map
- Mapping options include Navionics® Platinum+
- Ethernet Add Ons: LSS-1 StructureScan™ sonar imaging, Broadband Radar™ HD Digital Radars.
- NMEA 2000® networking
- Software enhancements for Broadband Radar™ navigation: Fast Scan rotation rate, MARPA, Guard zones.
- Digital switching integration
- Two-year limited warranty



HDS-10m



HDS-8m



HDS-7m



HDS-5m

Main Products

Part Number	Barcode	Description	RRP
HDS-10m			
000-0140-04	0 42194 53293 6	HDS-10m - 10.4" chartplotter with worldwide background map	€ 1,999.00
HDS-8m			
000-0140-11	0 42194 53299 8	HDS-8m - 8" chartplotter with worldwide background map	€ 1,299.00
HDS-7m			
000-0140-18	0 42194 53306 3	HDS-7m - 6.4" chartplotter with worldwide background map	€ 799.00
HDS-5m			
000-0140-25	0 42194 53314 8	HDS-5m - 5" chartplotter with worldwide background map	€ 529.00

HDS Multifunction Fishfinder

The legendary Lowrance X-series lives on in this next-generation advancement in fishfinding for the serious and professional angler. Its exceptionally enhanced features and performance are precisely revealed on a high-definition 5"/12.7 cm SolarMAX™ PLUS display with adjustable screen and keypad backlighting. Best of all, Lowrance Broadband Sounder is now built in.



Main Features

- Built-in Broadband Sounder™
- SolarMAX™ PLUS high resolution display
- Ethernet Add Ons: LSS-1 StructureScan™ sonar imaging, Broadband Radar™, HD Digital Radars.
- NMEA 2000® Networking
- Two-year limited warranty

Main Products

Part Number	Barcode	Description	RRP
HDS-5x			
000-0140-28	0 42194 53317 9	HDS-5x - 5" fishfinder with 50/200 kHz Skimmer® transducer	€ 704.19
000-0140-27	0 42194 53316 2	HDS-5x - 5" fishfinder with 83/200 kHz Skimmer® transducer	€ 645.34
000-0140-29	0 42194 53318 6	HDS-5x - 5" fishfinder no transducer	€ 586.50

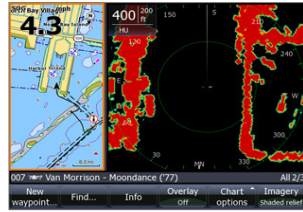
Advanced Networking

Lowrance HDS presents a wide range of advanced system building options to enhance your on-the-water experience, safety and enjoyment. All HDS models come fully ethernet-ready to share high-bandwidth data among all HDS displays on the boat. Connect up to four HDS displays and Ethernet network devices with the optional NEP-2 ethernet expansion port module for high-speed data distribution onboard. HDS also features NMEA 2000®, with the most innovative range of modules and sensors available. All add-on modules are then ready to simply plug-and-play! Complete your system with other HDS options.

Expand your HDS with Ethernetworks

Add Broadband Radar™

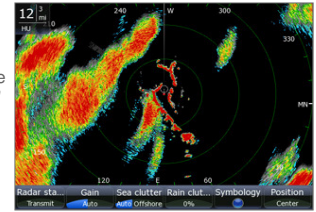
Add our revolutionary Broadband Radar™ to your HDS for unparalleled situational awareness.



Auto Harbor mode at 400' range.

Add HD Digital Radar

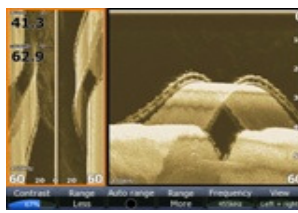
Integrate High-Definition Digital Radar into your HDS. Compact, dependable, and high-performance with 2kW, 4kW Domes and 6kW 4' open array scanners.



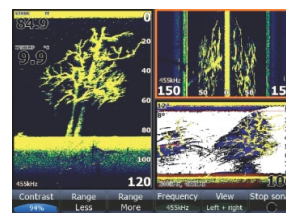
Narrow channel, front approaching.

Add StructureScan™

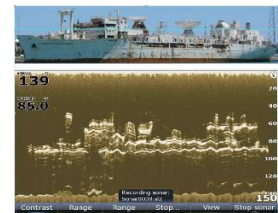
Our LSS-1 StructureScan™ Sonar Imaging Module sees fish and structure like never before using dual frequency side and down scan modes.



Submerged bridge in 30' of water with handrails clearly defined - almost photographic.



SideScan combined with DownScan Imaging™



DownScan of the VANDENBURG off Key West, FL in 2' - 4' seas.

Expand your HDS with NMEA 2000®

Add SonicHub™ Marine Audio Server

Experience the world's first marine audio hub and docking station with stunning high definition, waterproof color display.



Add Automatic Identification System

Reduce the risk of collisions with NAIS-300 that enables you to see and be seen at sea.



Add Engine and Vessel Management

Display real-time readings from a range of compatible electronic probes and sensors to monitor an array of vital engine and boating functions.



Add Gauges

Integrate advanced multi-function gauges with your HDS. Reliability, accuracy and simplified operation are guaranteed.



Add NMEA 2000® Starter Kit

Start your own onboard NMEA 2000® network with this complete starter kit. Allows future expansion to add sensors and displays.

Add Precision GPS and Compasses

Add the amazing, new LCG-4000 GPS antenna to enhance your GPS capability, with 5 updates per second. Add the RC42 for precision heading input.



Other HDS Options

Add Mapping

Choose from a range of powerful plug-and-play electronic charting options for your HDS for supreme navigational awareness.



Add Sonar Transducers

Lowrance integrates with the widest choice of high performance transducers to suit your boat, your preference and your expectations for superior performance.



Add Communications

Get in touch with Lowrance VHF marine communications. Innovative features including NMEA 2000®, FM radio, and GPS/trackplotter built-in to select models. Now with full Class D DSC for all models.

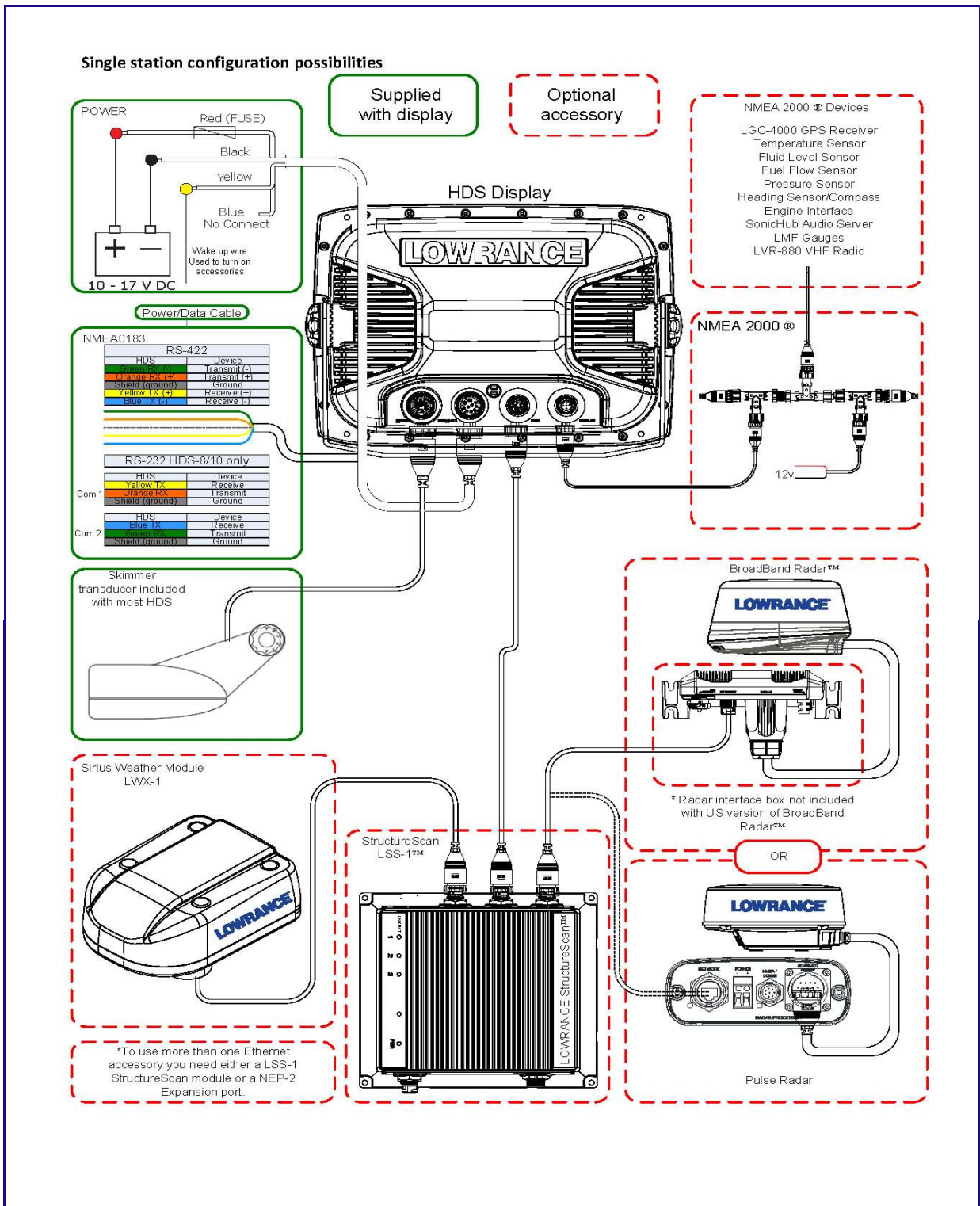


Add Performance Mounts

Optimize your HDS display viewing position with flexible and powerful mounting bracket solutions.



Single-station System



HDS accessories

Part Number	Barcode	Description	RRP
Blue-connector Transducers			
000-0106-72	0 42194 52404 7	HST-WSBL 83/200kHz transom-mount Skimmer® with built-in temp with blue connector	€ 63.24
000-0106-77	0 42194 52409 2	HST-DFSBL 50/200 kHz transom-mount Skimmer® with built-in temp with blue connector	€ 127.50
000-0106-71	0 42194 52403 0	HS-WSBL 83/200 kHz transom-mount depth-only Skimmer® with blue connector	€ 64.00
000-0106-89	0 42194 52421 4	PDRT-WBL 83/200 kHz shoot-thru or trolling-motor mount Skimmer® with remote temp sensor with blue connector	€ 68.00
000-0106-73	0 42194 52405 4	PD-WBL 83/200 kHz shoot-thru or trolling-motor mount depth only Skimmer® with blue connector	€ 60.00
000-0106-74	0 42194 52406 1	PDT-WBL 83/200 kHz trolling-motor mount Skimmer® with built-in temp with blue connector	€ 81.60
000-0099-96	0 42194 52429 0	SP-BL Transom-mount paddlewheel speed sensor with blue connector (non-networked)	€ 66.00
000-0099-97	0 42194 52430 6	ST-TBL Transom-mount paddlewheel speed/temp sensor with blue connector (non-networked)	€ 81.60
000-0051-45	0 42194 50192 5	TMB-S Trolling-motor mount bracket for standard Skimmer® transducer	€ 16.32
000-0099-95	0 42194 52428 3	TS-1BL Temperature sensor with blue connector (non-networked)	€ 57.12
000-0051-52	0 42194 50250 2	Suction Cup Kit - Suction cup kit for portable skimmer transducers	€ 16.32
000-10392-001	0 42194 53606 4	50/200kHz Skimmer™ transducer mounting kit	€ 12.24
000-0106-98	0 42194 52888 5	Epoxy 6 pack	#N/A
Blue-connector Airmar Transducers			
000-0136-02	0 42194 53359 9	P319 Plastic low profile thru-hull 50/200 kHz depth/temp with 45/12° beamwidths - 12m	€ 169.00
000-0136-03	0 42194 53360 5	P79 Plastic in-Hull 50/200 kHz depth only with 45/12° beamwidths - 12m	€ 125.00
000-10116-001	9420024107959	TM260 Plastic Transom Mount 50/200Khz 1kW Depth/Temp w 19/6° Beamwidths - 12m	€ 999.00
000-00021-001	0 42194 53443 5	B60 Bronze thru-hull 50/200 kHz depth/temp with 45/12° beamwidths and 20° tilt - 12m	#N/A
000-0136-05	0 42194 53362 9	B744V Bronze thru-hull 50/200 kHz depth/temp/speed with 45/12° beamwidths and high speed fairing block - 12m	€ 399.00
000-10247-001	9420024108482	B164 Bronze Low Profile Thru Hull 1kW 50/200Khz Depth/Temp w 22/20° 6/6° Array Beamwidths and 20° tilt - 12m	€ 899.00
000-0136-00	0 42194 53199 1	B258 Bronze thru-hull 50/200 kHz depth/temp with 15/21° 3/5° array beamwidths and high speed fairing block - 12m	€ 679.00
000-0106-82	0 42194 52414 6	B260 Bronze thru-hull 50/200 kHz depth/temp with 19/6° beamwidths and high speed fairing block - 12m	€ 1,149.00
000-0106-91	0 42194 52455 9	M260 Plastic in-hull 50/200 kHz depth only tank kit with 19/6° beamwidths - 12m	€ 999.00
22098552	0 42194 90148 0	DST-800 Palstic retractable Thru-hull 235kHz transducer Depth/Speed/Temp - 2m	#N/A
Adapter/Extension Cables and Switch Boxes			
000-0099-94	0 42194 52424 5	XT-20BL - 20' blue transducer extension cable (50 kHz or 200 kHz)	€ 40.80
000-10046-001	0 42194 53511 1	BSM-1 Adapter Cable, 7 pin Blue Connector to BARE wires	€ 19.00
000-00022-001	0 42194 53444 2	Cable, adapter, 7 pin BLUE to 6 pin LTW	€ 49.00
000-0046-26	0 42194 52426 9	SB-9BL - Switch box to connect 2 blue connector transducers to one sonar unit	€ 130.00
Power Adapters			
000-0099-44	0 42194 51718 6	AC-CAF - AC power adapter to female cigarette lighter socket for power from 120V wall socket	€ 35.00
000-0119-10	0 42194 52469 6	CA-8 - Cigarette plug power cable for all 5" and above Lowrance products except X-96	€ 48.96

HDS Accessories (Continued)

Part Number	Barcode	Description	RRP
NMEA 2000 Sensors[^]			
000-0125-28	0 42194 53369 8	LGC-4000 high sensitivity GPS WAAS antenna with 5 Hz update rate	€ 233.58
22090195	8 09190 33182 2	RC42 - Rate gyro fluxgate compass (Simrad branded*) required for MARPA operation	#N/A
000-0120-39	0 42194 52990 5	EP-60R - Fuel flow sensor, with 10f-t cable and T-connector	€ 90.78
000-0120-41	0 42194 52987 5	EP-65R - Fluid level sensor, with 10-ft cable and T-connector	€ 80.58
000-0120-49	0 42194 52988 2	EP-70R - Transom mount paddlewheel speed sensor, with 10-ft cable and T-connector	€ 80.58
000-0120-51	0 42194 52989 9	EP-80R TM - Transom mount temperature sensor, with 10-ft cable and T-connector	€ 80.58
000-0120-53	0 42194 53002 4	EP-80R TH - Thru-hull temperature sensor, with 10-ft cable and T-connector	€ 80.58
000-0120-73	0 42194 53190 8	EP-85R - Fuel usage/range storage sensor for Evinrude engines, with 10-ft cable and T-connector	€ 80.58
000-0120-29	0 42194 52900 4	EP-90R - Pressure sensor, with 10-ft cable and T-connector	€ 90.78
000-0120-62	0 42194 53039 0	Evinrude engine interface cable 15-ft and T-connector	€ 80.58
000-10458-001	942002411214 4	DST800 Cruising Bundle with NMEA2000® networking kit.	EMEA only
000-10459-001	942002411215 1	DST800 / IS20 Sailing Bundle with NMEA2000® / SimNet networking kit.	EMEA only
000-0120-37	0 42194 52982 0	Yamaha engine interface cable 15-ft and T-connector	€ 80.58
[^] All NMEA 2000® Sensors require a NMEA 2000® backbone - use 000-0124-69 * Requires 000-0127-45 SimNet to N2K Adaptor Kit (listed in NMEA 2000® accessories) Suzuki engine interface and adaptor cables available direct from Suzuki Mercury/Mercruiser/Mariner engine NMEA2000 compatible SmartMonitor gauges and accessories available direct from Mercury			
NMEA 2000® Accessories			
000-0124-69	0 42194 53349 0	NMEA 2000® starter kit - Backbone required to install one or more NMEA 2000® sensors with any HDS install; includes power cable, 2-ft cable, 15-ft cable, 2 x T-connector, network terminators	€ 49.98
000-0119-79	0 42194 52967 7	N2K-T-RD - NMEA 2000® T-connector for connection of additional network device	€ 16.32
000-0119-88	0 42194 52976 9	N2KEXT-2RD - 0.61 m (2-ft) NMEA 2000® cable for network extension or connection to additional network device	€ 26.52
000-0127-53	0 42194 53358 2	N2KEXT-6RD - 1.82 m (6-ft) NMEA 2000® cable for network extension or connection to additional network device	€ 41.82
000-0119-86	0 42194 52974 5	N2KEXT-15RD - 4.55 m (15-ft) NMEA 2000® cable for network extension or connection to additional network device	€ 46.92
000-0119-83	0 42194 52971 4	N2KEXT-25RD - 7.58 m (25-ft) NMEA 2000® cable for network backbone extension only	€ 58.14
000-0119-75	0 42194 52964 6	N2K-PWR-RD - NMEA 2000® power node (cable + T connector); to upgrade LMS/LCX/GlobalMap series network to HDS system	€ 48.96
000-0127-05	0 42194 53045 1	NAC-FRD2FBL - Adapter cable to enable connection of a red or black NMEA 2000® device to a blue network	€ 24.48
000-0127-45	0 42194 53281 3	SimNet to N2K Adaptor Kit - Connect Simrad heading sensor (RC42) to NMEA 2000® network; includes Simnet-to-N2k male adaptor, Simnet-2 Joiner, T connector.	€ 95.88
000-0127-52	0 42194 53357 5	TR-120-KIT - Set of 1 male and 1 female NMEA 2000 terminators	€ 15.30
000-10169-001		LGC-4000 Spat - Pole mount spat for LGC-4000, LGC-4000 Baja	€ 25.50
Ethernetwork Accessories			
000-10029-001	0 42194 53559 3	NEP-2 Network Expansion Port	€ 253.98
000-0127-51	0 42194 53356 8	ETHEXT-6YL 1.82 m (6 ft) ethernet cable	€ 31.62
000-0127-29	0 42194 53204 2	ETHEXT-15YL 4.55 m (15 ft) ethernet cable	€ 40.80
000-0127-30	0 42194 53205 9	ETHEXT-25YL 7.58 m (25 ft) ethernet cable	€ 59.16
000-0127-37	0 42194 53234 9	ETHEXT-50YL 15.15 m (50 ft) ethernet cable	€ 79.56
000-0127-56	0 42194 53387 2	ETHEXTRJ45-2MTY - RJ45 to yellow ethernet adaptor cable - 2 m (6.5ft)	€ 35.00

HDS Accessories (Continued)

Part Number	Barcode	Description	RRP
Portable Packs			
000-10209-001	0 42194 53570 8	PPP-18I -Elite/Mark Icefish bag with transducer	€ 149.00
000-10346-001	0 42194 53603 3	Adapter HDS5 PP-17 / PPP-18I	€ 49.00
000-10030-001	0 42194 53505 0	PPP-17 - Elite/Mark portable power pack for 5" models with Suction cup transducer	€ 99.00
000-0106-94	0 42194 52711 6	PTI-WBL - Ice transducer with blue connector	€ 81.60
000-10427-001	942002411109 3	Battery charger AC adapter for Ice fishing kit	€ 29.95
Performance Mounting Options/Flush mount Kits			
000-0101-63	7 93442 00111 6	MB-8 - RAM 1-1/2" ball-mounting bracket with 8" arm for 5" to 8" units	€ 50.00
000-0124-74	0 42194 53365 0	MB-35 - RAM swing-arm mounting bracket for 5" to 8" units	€ 61.20
000-0124-75	0 42194 53366 7	MB-36 - RAM heavy-duty 2-1/4" ball-mounting bracket with short arm for 10" units	€ 102.00
000-0124-76	0 42194 53367 4	MB-37 - RAM 1-1/2" ball-mounting bracket with standard arm for 10" units	€ 61.20
000-0124-77	0 42194 53368 1	MB-38 - RAM swing-arm mounting bracket for 10" units	€ 100.00
000-0124-65	0 42194 53345 2	FM-12 Flush Mount kit for all HDS models	€ 16.32

HDS Spare Parts

Part Number	Barcode	Description	RRP
Mounting Brackets and Flush mount Kits			
000-0124-60	0 42194 53340 7	GB-22 - Gimbal bracket for HDS-10	€ 29.00
000-0124-59	0 42194 53339 1	GB-21 - Gimbal bracket for HDS-8	€ 26.00
000-0124-58	0 42194 53338 4	GB-20 - Gimbal bracket for HDS-7	€ 25.50
000-0124-57	0 42194 53337 7	GB-19 - Gimbal bracket for HDS-5	€ 18.36
000-0051-83	0 42194 50312 7	GBSA-1 - Gimbal bracket swivel adapter	€ 16.32
000-0124-56	0 42194 53336 0	GK-12 - Gimbal knobs (set of two)	€ 16.32
000-0099-06	0 42194 50499 5	HS-WS-SS Mtg Kit - Mounting kit for transom mount 83/200 kHz skimmer transducers	€ 16.32
Other			
000-0124-64	0 42194 53344 5	CVR-15 - Protective cover for HDS-10, HDS-10m	€ 24.48
000-0124-63	0 42194 53343 8	CVR-14 - Protective cover for HDS-8, HDS-8m	€ 24.48
000-0124-62	0 42194 53342 1	CVR-13 - Protective cover for HDS-7, HDS-7m	€ 24.48
000-0124-61	0 42194 53341 4	CVR-12 - Protective cover for HDS-5, HDS-5m, HDS-5x	€ 24.48
000-0124-82	0 42194 53394 0	BZ-DR-4 - SD card door replacement for HDS-10, HDS-10m	€ 38.76
000-0124-81	0 42194 53393 3	BZ-DR-3 - SD card door replacement for HDS-8, HDS-8m	€ 38.76
000-0124-80	0 42194 53392 6	BZ-DR-2 - SD card door replacement for HDS-7, HDS-7m	€ 34.68
000-0124-79	0 42194 53391 9	BZ-DR-1 - SD card door replacement for HDS-5, HDS-5m, HDS-5x	€ 24.48
Cables and Connectors			
000-0127-49	0 42194 53353 7	PC-30-RS422 - Power cable for HDS series	€ 25.00
000-0124-70	0 42194 53350 6	CAP-1 - Set of connector caps for HDS series	€ 16.32
000-0127-50	0 42194 53354 4	FUSE-1 - 3 amp fuses (set of 3)	€ 15.30

Accessories Included in the HDS boxes

Find below the list of items included in every HDS box by size of display

	HDS 5"	HDS 7"	HDS 8"	HDS 10"
HDS Bezel & Card Door	000-0124-79	000-0124-80	000-0124-81	000-0124-82
Dust Cover	000-0121-61	000-0121-62	000-0124-63	000-0124-64
Gimbal Bracket	000-0124-57	000-0124-58	000-0124-59	000-0124-60
Cut-out Template	000-0124-65	000-0124-65	000-0124-65	000-0124-65
Bracket Knobs	000-0124-56	000-0124-56	000-0124-56	000-0124-56
Power/Data Cable	000-0127-49	000-0127-49	000-0127-49	000-0127-49
Connector Caps	000-0124-70	000-0124-70	000-0124-70	000-0124-70
Installation Manual	Dow nload	Dow nload	Dow nload	Dow nload
Operation Manual	Dow nload	Dow nload	Dow nload	Dow nload
Quick Start Guide	Dow nload	Dow nload	Dow nload	Dow nload

LSS-1

Designed for all HDS displays, Lowrance StructureScan™ sonar imaging takes finding fish and structure to the highest level of viewing detail ever achieved. It's the first to give you the full picture, with phenomenal panoramic underwater sonar imaging. Scans left...scans right...AND scans straight down from your boat! It removes guesswork so you spend more productive time catching fish.



HDS
HIGH DEFINITION SYSTEM

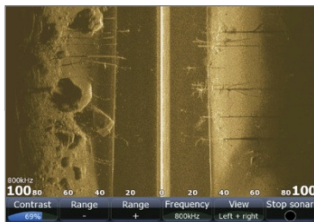
Main Features

- DownScan Imaging™, high-detail sonar imaging focused straight down below your boat up to 100 m (300-ft)
- SideScan Imaging™ detail showing full-screen viewing for supercrisp detail with 146 m (500-ft) side-to-side underwater coverage
- SideScan + DownScan Imaging™ available with split screen viewing options to give you the complete picture
- View DownScan Imaging™ with HDS Broadband Sounder in split-screen, to remove all the guesswork
- Synchronized Sonar history Track-Back™ with waypoint marking
- Networkable with up to three HDS multifunction displays or ethernet sensors
- Fully-waterproof module
- Rugged transducer with a smoothly fluid low-profile, low-drag design for multiple mounting locations
- Built-in water temperature sensor

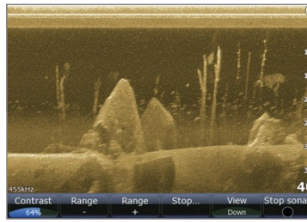


How it works: SideScan left and right, and DownScan Imaging™ below

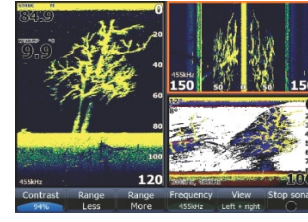
StructureScan™ Images



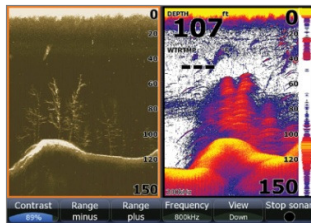
Standing timber and boulders with SideScan



High-detail views of fish-holding structure with DownScan Imaging™



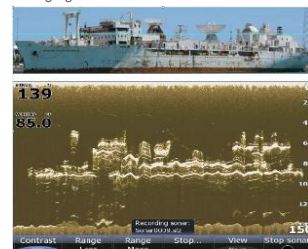
SideScan combined with DownScan Imaging™



DownScan Imaging™ (left) confirms trees, 2D sonar confirms fish as arches



Submerged bridge in 30' of water with handrails clearly defined - almost photographic.



DownScan of the VANDENBURG off Key West, FL in 2' - 4' seas.

Main Products

Part Number	Barcode	Description	RRP
LSS-1			
000-0132-06	0 42194 53407 7	LSS-1 - StructureScan™ Sonar Imaging module with transducer and 6 m (20 ft) cable	€ 610.98
000-00099-002	0 42194 53475 6	LSS-1 - StructureScan™ Sonar Imaging module only	€ 407.95
LSS-1 + HDS bundles			
000-10623-001	942002411488 9	HDS10 Insight™ USA LSS BNDL - HDS-10 Insight™ USA with StructureScan™ Sonar Imaging Bundle	
000-10622-001	942002411487 2	HDS8 Insight™ USA LSS BNDL - HDS-8 Insight™ USA with StructureScan™ Sonar Imaging Bundle	
000-10321-001	0 42194 53600 2	HDS7 Insight LSS BNDL - HDS-7 Insight™ USA with StructureScan™ Sonar Imaging Bundle	
000-00099-001	0 42194 53474 9	HDS5I Lake Insight LSS BNDL - HDS-5 Lake Insight™ with StructureScan™ Sonar imaging Bundle	

Accessories

Part Number	Barcode	Description	RRP
StructureScan Transducers			
000-00099-003	0 42194 53476 3	THSST-DF StructureScan™ Sonar plastic thru-hull transducer	€ 305.95
000-00099-007	0 42194 53480 0	SST-DFSBLK - LSS-1 Skimmer Mount Transducer	€ 202.98
000-10364-001	0 42194 53601 9	BRONZE StructureScan™ Sonar thru-hull transducer.	€ 599.00
000-10365-001	0 42194 53602 6	Dual Transducer KIT With Y Cable for StructureScan™ includes 2 Bronze StructureScan™ Sonar thru-hull transducers (000-10364-001) and a Y cable for StructureScan™ (000-10202-001).	€ 1,199.00
000-10393-001	0 42194 53666 8	Fairing Block B TH XDCR - Fairing block for StructureScan™ Sonar Bronze thru-hull transducer	€ 79.00
StructureScan cables, mount brackets and fuses			
000-00099-004	0 42194 53477 0	SS-TMB - StructureScan™ Sonar trolling-motor mount bracket	€ 49.98
000-00099-006	0 42194 53479 4	10EX-BLK - 10-ft 9 pin Transducer extension cable	€ 49.98
000-0127-51	0 42194 53356 8	ETHEXT-6YL 6-ft ethernet cable	€ 31.62
000-0127-29	0 42194 53204 2	ETHEXT-15YL 15-ft ethernet cable	€ 40.80
000-0127-30	0 42194 53205 9	ETHEXT-25YL 25-ft ethernet cable	€ 59.16
000-0127-37	0 42194 53234 9	ETHEXT-50YL 50-ft ethernet cable	€ 79.56
000-10202-001	0 42194 53581 4	StructureScan™ transducer Y Cable	€ 50.95
000-00099-005	0 42194 53478 7	SS-BRK-SS - LSS-1 Skimmer Mount Transducer Bracket	€ 49.98
000-0127-50	0 42194 53354 4	FUSE-1 - 3 amp fuses (set of 3)	€ 15.30
000-10200-001	0 42194 53569 2	LSS-1 hardware Service Kit - replacement skimmer bracket and stainless steel screws	€ 25.00

Basic System (Single HDS Display)

So technically advanced, Lowrance StructureScan™ sonar imaging is by design as easy to network as it is to use. Simply connect one add-on powered LSS-1 “black box” module (includes imaging transducer) with a single high-speed, high-bandwidth Lowrance ethernet cable (also included).



Multi-station Network

But why settle for one screen to view? The ingenious StructureScan™ sonar imaging black box networks with up to three HDS multifunction displays to share SideScan, DownScan Imaging™ and 2D sonar screens for boat-wide underwater surveillance with independent control. Just purchase additional ethernet cables, and you’ve got a full underwater imaging network working in your favor.



Rock Your Boat™

Take control and experience a revolution in boating entertainment with SonicHub™, the world's first marine audio hub and docking station with a stunning high definition, waterproof color display. Simple to install, SonicHub™ integrates seamlessly with Lowrance HDS high resolution, color display screens with intuitive and stylish graphical user interface.

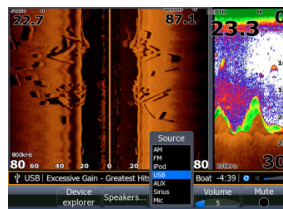


Main Features

- Complete marine-grade audio system operated from Lowrance HDS displays through the NMEA 2000® network.
- Dock provides a safe waterproof spot for your Apple product with full operational control and charging.
- Features 4 x 50W amplifiers and consolidates multiple input/output sources.
- Enjoy loud and clear music from Apple iPod, iPhone, iTouch, USB flash drive (MP3), built-in global AM/FM radio, Sirius satellite radio (US only).
- SubWoofer line out
- Includes two 6.5" 200W custom 2 way marine grade speakers with low magnetic technology.



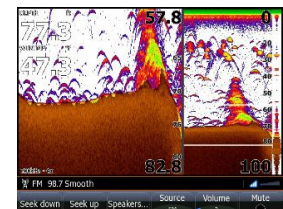
iPod Media Bar



All Audio Source selections showing



Speaker adjustment screen showing Sub Woofer bandpass control



FM Radio showing Radio Digital System (RDS) messages

Main Products

Part Number	Barcode	Description	RRP
SonicHub™			
000-10141-001	9420024107980	Lowrance SonicHub™ - includes server, dock, speakers and power / network cables	€ 304.98

Accessories

Part Number	Barcode	Description	RRP
000-10142-001	9420024107997	Lowrance speaker pack - includes 2x speakers only	€ 70.38
000-0124-69	0 42194 53349 0	NMEA 2000 starter kit - backbone required to install one or more NMEA2000 sensors; includes power cable, 2ft cable, 15ft cable, 2 x T-connector, network terminators Not required if HUB is being added to an existing NMEA2000 network	€ 49.98
NMEA2000 Accessories			
000-0119-79	0 42194 52967 7	N2K-T-RD - NMEA 2000® T-connector for connection of additional display	€ 16.32
000-0119-88	0 42194 52976 9	N2KEXT-2RD - 0.61 m (2-ft) NMEA 2000® cable for network extension or connection to additional display	€ 26.52
000-0127-53	0 42194 53358 2	N2KEXT-6RD - 1.82 m (6-ft) NMEA 2000® cable for network extension or connection to additional display	€ 41.82
000-0119-86	0 42194 52974 5	N2KEXT-15RD - 4.55 m (15-ft) NMEA 2000 cable for network extension or connection to additional display	€ 46.92
000-0119-83	0 42194 52971 4	N2KEXT-25RD - 7.58 m (25-ft) NMEA 2000 cable for network backbone extension only	€ 58.14

Broadband 3G™ Radar

Lowrance Broadband Radar a.k.a. frequency modulated continuous wave (FMCW) radar is nothing new... but, it was when we first launched the technology in 2009! We developed a radar with superior short-range target detection and unrivalled target separation. Armed with this new technology boaters received a previously unseen level of situational awareness to improve safe navigation in any state of visibility. Broadband 3G Radar will undoubtedly mark the beginning of the end of conventional pulse radar on recreational craft as the newest 3G boasts a massive 30% increase in range over the original BR24 while retaining its impressive short-range credentials.



Main Features

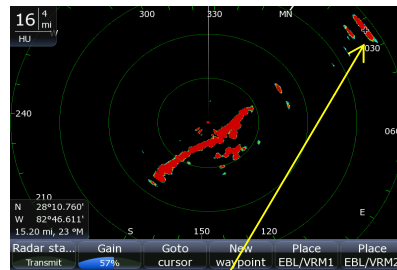
- New, longer range capability - 30% more than our previous radar with 2X transmit power, maintaining 200' (50m) short range
- Crystal Clear Image of your surroundings with AUTO Harbour/Offshore Modes
- Extremely low radiation, mount anywhere
- InstantOn™ with no tuning required
- "Fast Scan" Mode up to 36RPM
- Low Power Consumption, ideal for sailboats
- 10 MARPA targets and Dual Guard Zones



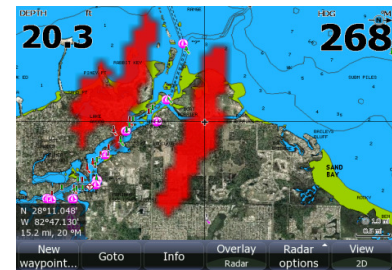
Tarpon Spring's Anclote River Power Plant 1 tall Flare Stack



Broadband 3G seeing Tarpon Spring Power Plant Stack at >15nm away



Broadband 3G with HDS in Radar Only mode to see the same Power Plant Stack



Broadband 3G with HDS Zoomed In

Main Products

Part Number	Barcode	Description	RRP
Broadband 3G™ Radar			
000-10418-001	9420024110980	LOWRANCE 3G Radar Kit (USA) - Broadband 3G™ Radar radome for HDS - US version with 10 m scanner cable and ethernet adapter cable - 2m (6.5 ft)	
000-10435-001	9420024111178	LOWRANCE 3G Radar Kit (ROW) - Broadband 3G™ Radar radome for HDS - ROW version with 10 m scanner cable and RI10 interface box and Yellow ethernet cable - 1.8m (6 ft)	€ 1,399.00

Broadband Radar Accessories required for radar overlay

Part Number	Barcode	Description	RRP
NMEA 2000® Heading Sensors			
22090195	8 09190 33182 2	RC42 - Rate gyro fluxgate compass (Simrad branded) with 5 m Simnet cable. Must be used for MARPA information	
000-0127-45	0 42194 53281 3	SimNet to NMEA 2000® Adaptor Kit - Connect Simrad heading sensor (RC42) to NMEA 2000 network; includes Simnet-to-NMEA 2000® male adaptor, Simnet-2 Joiner, T connector.	€ 95.88
NMEA2000 Accessories			
000-0119-79	0 42194 52967 7	N2K-T-RD - NMEA 2000® T-connector for connection of additional display	€ 16.32
000-0119-88	0 42194 52976 9	N2KEXT-2RD - 0.61 m (2-ft) NMEA 2000® cable for network extension or connection to additional display	€ 26.52
000-0127-53	0 42194 53358 2	N2KEXT-6RD - 1.82 m (6-ft) NMEA 2000® cable for network extension or connection to additional display	€ 41.82
000-0119-86	0 42194 52974 5	N2KEXT-15RD - 4.55 m (15-ft) NMEA 2000 cable for network extension or connection to additional display	€ 46.92
000-0119-83	0 42194 52971 4	N2KEXT-25RD - 7.58 m (25-ft) NMEA 2000 cable for network backbone extension only	€ 58.14

Broadband Radar Accessories

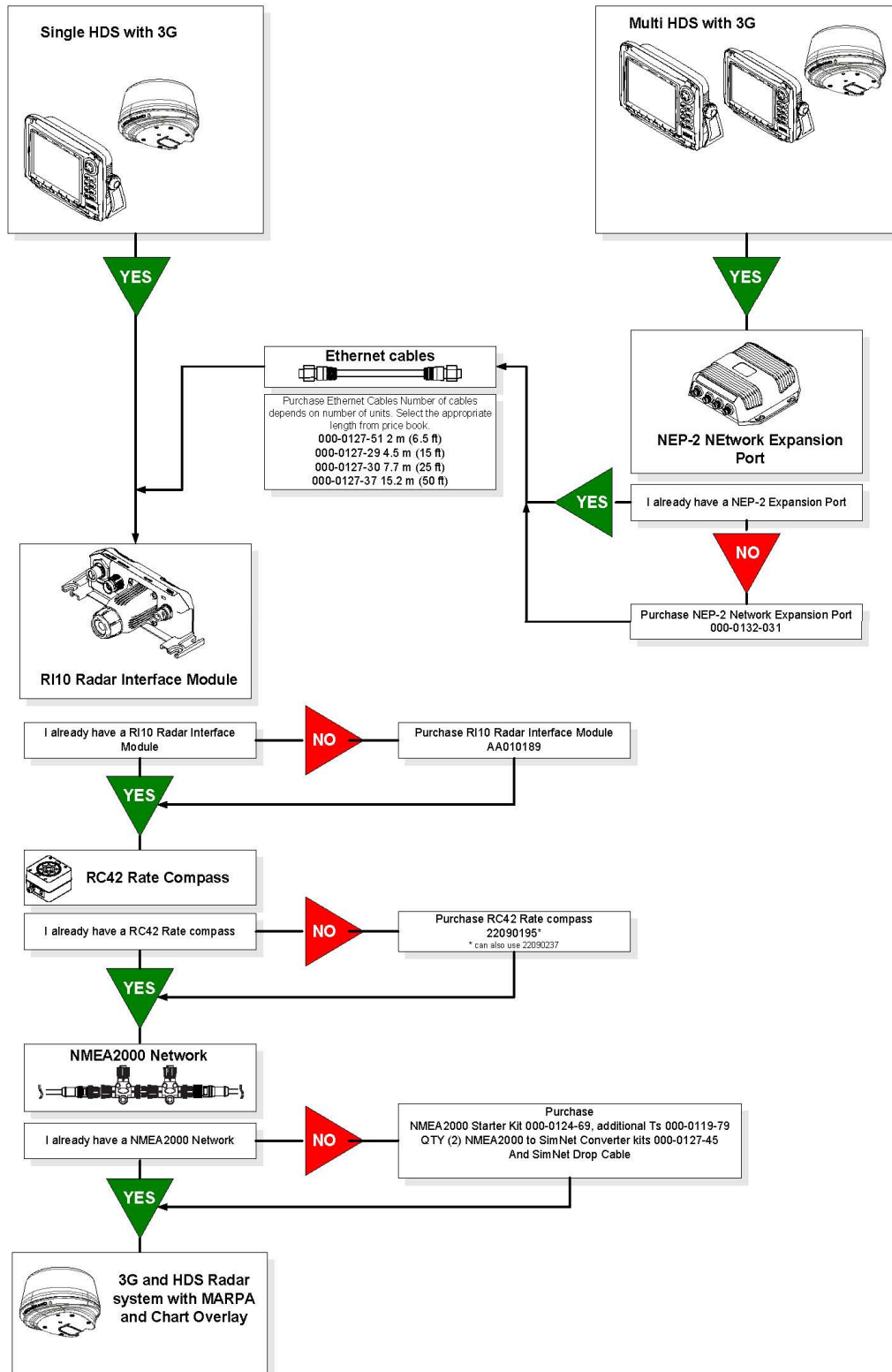
Part Number	Barcode	Description	RRP
Radar Mounts			
SC20	5060114790902	SC20 - Mast mount kit for Broadband Radar	€ 319.00
LMB-A1	5060114790926	LMB-A1 - Self-leveling radar backstay (aft) mount for Broadband Radar	€ 1,569.00
PT2001	5060114790216	PT2001 - PowerTower for Broadband Radar - 350mm (14") white composite	€ 399.00
PT2004	5060114790247	PT2004 - PowerTower for Broadband Radar - 150mm (6") white composite	€ 349.00
PT3010	5060114790438	PT3010 - 4° wedge for composite and aluminium PowerTower for Broadband Radar	€ 97.00
Cables, Connectors and Interface boxes			
000-10029-001	0 42194 53559 3	NEP-2 Network Expansion Port	€ 253.98
AA010211	9420024106556	Broadband Radar External scanner cable - 10 m (32.8-ft)	€ 93.00
AA010212	9420024106563	Broadband Radar External scanner cable - 20 m (65.6-ft)	€ 149.00
AA010213	9420024106570	Broadband Radar External scanner cable - 30 m (98.4-ft)	€ 199.00
AA010189	9420024106419	RI10 - For Broadband Radar only, Interface Junction Box for waterproof installation; also provides heading input for systems with NMEA2000 backbone (SimNet)	€ 199.00
000-0127-51	0 42194 53356 8	ETHEXT-6YL 1.82 m (6 ft) ethernet cable	€ 31.62
000-0127-29	0 42194 53204 2	ETHEXT-15YL 4.55 m (15 ft) ethernet cable	€ 40.80
000-0127-30	0 42194 53205 9	ETHEXT-25YL 7.58 m (25 ft) ethernet cable	€ 59.16
000-0127-37	0 42194 53234 9	ETHEXT-50YL 15.15 m (50 ft) ethernet cable	€ 79.56

Note: See the MARPA Radar section for SIMNET/NMEA2000 drop cables options

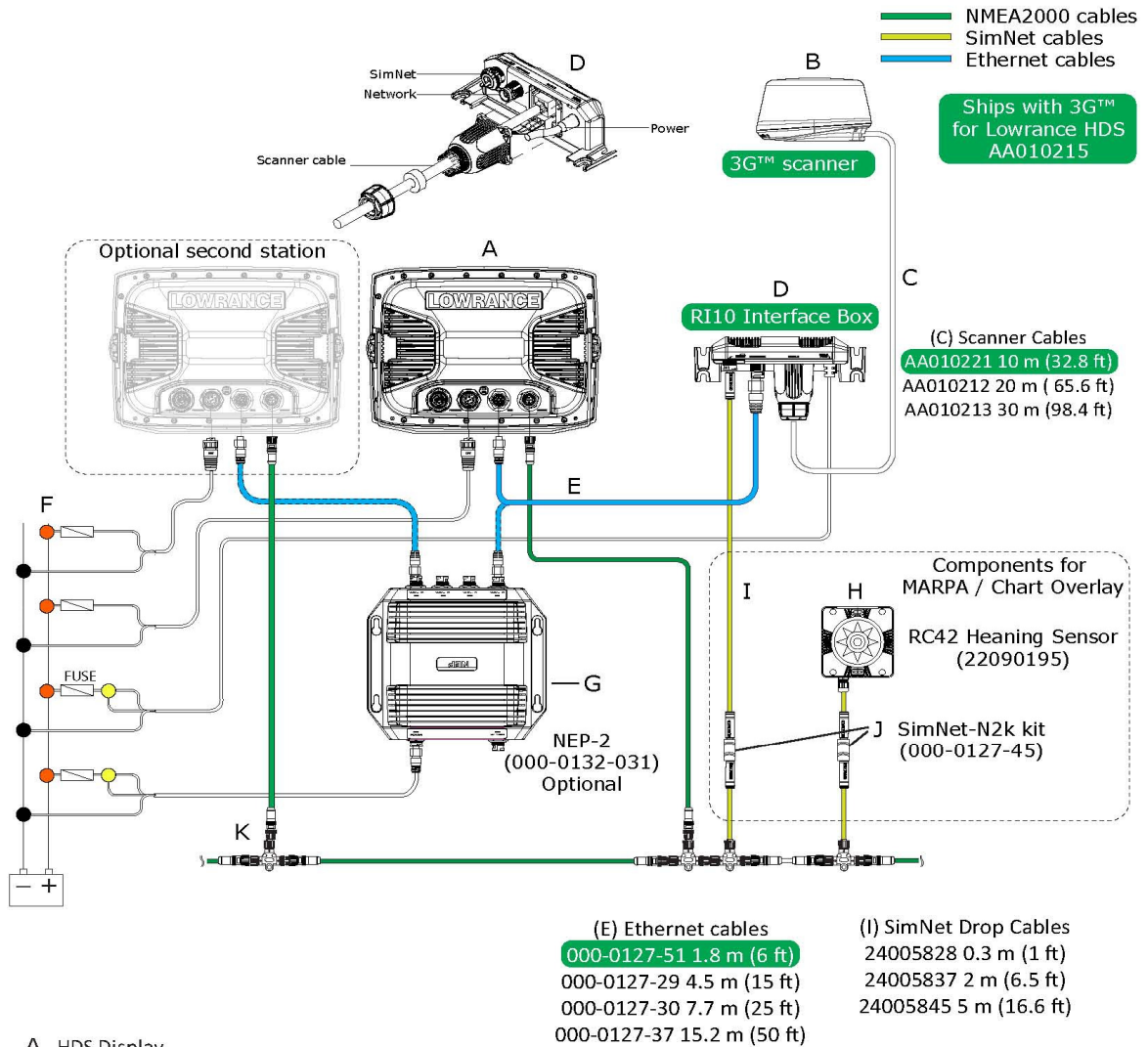
Spare Parts

Part Number	Barcode	Description	RRP
000-0127-56	0 42194 53387 2	ETHEXTRJ45-2MTY - RJ45 to yellow ethernet adaptor cable - 2 m (6.5ft)	€ 35.00

System Component Selection



How to get MARPA information on HDS with Broadband 3G™ Radar



A HDS Display

B Broadband 3G™ Radar Scanner

C Scanner cable ships with a 10 m (33 ft) : Optional 20 m (65 ft) or 30 m (98 ft).

D RI10 Radar interface box

E Ethernet cable. 3G™ comes with a 1.8 m (6 ft) 5 pin cable. The 3G™ can be connected directly to the HDS or via a Network Expansion Port (G)

F Power: Note the yellow wire of the RI10 (and NEP) must be connected to 12 V DC supply)

G Optional NEP2 (Network Expansion port) (000-132-031)

For chart overlay following parts are required:

H RC42 Heading sensor:(22090195): RC42 ships with a 4 m (13 ft SimNet cable.

J SimNet to NMEA2000 adapter kit (000-0127-45) (Kit Includes SimNet barrel joiner, a SimNet to Micro-C cable

For MARPA the parts following are required in addition the above:

I SimNet drop cable: (0.3 m 1ft, 2 m 6ft or 5 m 15ft) Connects to the NMEA2000 backbone via SimNet to N2k conversion kit (J)

J SimNet to NMEA2000 adapter kit (000-0127-45) (Kit Includes SimNet barrel joiner, a SimNet to Micro-C cable 0.5 m (1.6 ft)and a NMEA2000 T-joiner)

K NMEA2000 backbone

LRA-1800, LRA-2400 and TX06L-1

Advanced Lowrance digital-signal processing in high-definition radome choices for HDS. Fast, detailed radar detection of even small and distant targets with superb accuracy in dark, fog and rain alike. Compact, dependable and high-performance, both network through high-speed Ethernet connectivity for onboard radar display sharing.

Radars for use with Lowrance HDS and older LCX series of products.



HDS
HIGH DEFINITION SYSTEM



LRA-2400



LRA-1800

Main Features

- Interfaces charts and radar detail in a single, detail-rich display when coupled with an optional, compatible NMEA 2000® heading sensor
- Automatic Tune, Gain and Sea Clutter adjustment
- Dual Guard Zone Alerts for targets entering user-defined scan area
- Digital Sensitivity Time Control curves reject clutter with setting of return strength/distance thresholds
- Color palette choices for improved target distinction based on viewing conditions
- 10 Target MARPA

LRA-1800

- 2 kW, 46 cm (18") scanner with 2 kW HD processor
- 5.2° horizontal beamwidth, 24° vertical beamwidth
- Up to 24 nm range

LRA-2400

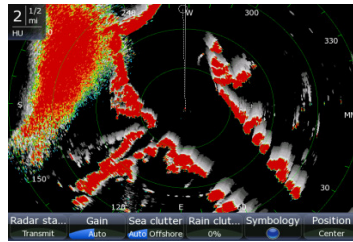
- 4 kW, 61 cm (24") scanner with 4 kW HD processor
- 4° horizontal beamwidth, 25° vertical beamwidth
- Up to 48 nm range

TX06L-1

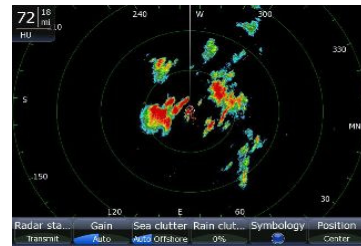
- 6 kW pedestal with a 129 cm (4') open array 6kW HD processor
- 1.8° horizontal beamwidth, 20° vertical beamwidth
- Up to 72 nm range
- Great for birds finding and long range storm cell detection



Storm cell tracking on HDS with Sirius Weather



Strong rain front line approaching less than 1 nm away with radar trails ON pinpointing a safe harborage about .3nm away to the SE



6kW HD Digital Open Array (Pulse) Radar on 72nm range with full color storm cells

Main Products

Part Number	Barcode	Description	RRP
High Definition Digital Radar			
000-0121-38	0 42194 53379 7	LRA-1800 HD Digital Radar - 2 kW 18" Radome with installed 15 m scanner cable. Parts included: 000-0127-56 Ethernet Yellow male to RJ45 female 2m Cable AA0100079 RJ45 male to male 0.5m Cable	€ 1,477.98
000-0121-39	0 42194 53380 3	LRA-2400 HD Digital Radar - 4 kW 24" Radome with 15 m scanner cable. Parts included: 000-0127-56 Ethernet Yellow male to RJ45 female 2m Cable AA0100079 RJ45 male to male 0.5m Cable	€ 2,403.03
000-10366-001	9420024108871	TX06L-1 HD Digital Radar - 6 kW 4' Open Array with 20 m (66ft) scanner cable and Radar Processor Parts included: 000-0127-56 Ethernet cable adapter for 5p Yellow male to RJ45 female 2m (6.6) Cable AA010080 RJ45 male to male 2m (6.6') Cable	€ 3,359.00

Note: all units require RC42 Simnet Rate Compass and AT10HD for MARPA

Accessories

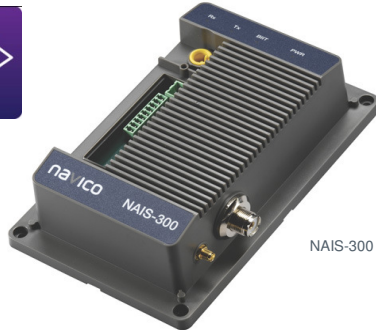
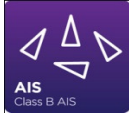
Part Number	Barcode	Description	RRP
Radar Mounts			
SC12	5060114790032	SC12 - Mast mount kit for 2 kW 18" radome	
LMB-A2	5060114790933	LMB-A2 - Self-leveling radar backstay (aft) mount for 2 kW 18" radome	
PT2002	5060114790223	PT2002 - PowerTower for 2 kW 18" radome - 350 mm (14") white composite	
PT2005	5060114790254	PT2005 - PowerTower for 2kW 18" / 4 kW 24" radome (reqs 19042) - 350mm (14") white composite	
19042	5060114792678	19042 - Adapter plate for 4 kW 24" radome	
SC21	5060114791022	Mast mount kit for 4 kW 24" radome (requires 19042)	
NMEA 2000® Heading Sensors			
22090195	8 09190 33182 2	RC42 - Rate gyro fluxgate compass (Simrad branded) with 5 m Simnet cable. Must be used for MARPA information	
000-0127-45	0 42194 53281 3	SimNet to NMEA 2000® Adaptor Kit - Connect Simrad heading sensor (RC42) to NMEA 2000® network; includes Simnet-to-NMEA 2000® male adaptor, Simnet-2 Joiner, T connector.	€ 95.88
NMEA2000 Accessories			
000-0119-79	0 42194 52967 7	N2K-T-RD - NMEA 2000® T-connector for connection of additional display	€ 16.32
000-0119-88	0 42194 52976 9	N2KEXT-2RD - 0.61 m (2-ft) NMEA 2000® cable for network extension or connection to additional display	€ 26.52
000-0127-53	0 42194 53358 2	N2KEXT-6RD - 1.82 m (6-ft) NMEA 2000® cable for network extension or connection to additional display	€ 41.82
000-0119-86	0 42194 52974 5	N2KEXT-15RD - 4.55 m (15-ft) NMEA 2000 cable for network extension or connection to additional display	€ 46.92
000-0119-83	0 42194 52971 4	N2KEXT-25RD - 7.58 m (25-ft) NMEA 2000 cable for network backbone extension only	€ 58.14
Cables and Connectors			
000-10029-001	0 42194 53559 3	NEP-2 Network Expansion Port	€ 253.98
000-0127-56	0 42194 53387 2	ETHEXTRJ45-2MTY - RJ45 to yellow ethernet adaptor cable - 2 m (6.5ft)	€ 35.00
AA010080	9420024105306	Ethernet RJ45 male / male cable 2 m (6.5 ft)	€ 59.00
AA010083	9420024105337	Ethernet Joiner- RJ45 Female/female	€ 69.00
AA010085	9420024105351	Ethernet RJ45 field termination kit	€ 25.00

Spare Parts

Part Number	Barcode	Description	RRP
Cables and Connectors			
24006694	9420024106013	AT10HD - Adaptor SimNet heading (RC42) to 9174 HD Digital Radar processor box 0183 12-pin connector	#N/A

AIS Class B Systems

Greatly reduce the risk of collisions with NAIS-300. Automatic Identification Systems are a new type of safety equipment that enables you to see and be seen at sea which is a serious concern in today's congested sea ports and busy ocean shipping lanes. AIS focuses your awareness on all vessels in the vicinity and helps reduce the risk of collision by exchanging safety data between vessels.



Main Features

- Black Box Class-B AIS Transponder System with GPS receiver
- NMEA 2000 / NMEA 0183 (high speed) Interface
- AIS Transmit & Receive function (AIS Class-B)



Captured AIS vessel data from Chart Cursor position



Selected AIS vessel anchored offshore Miami in the harborage

Main Products

Part Number	Barcode	Description	RRP
NAIS-300			
000-0135-04	0 42194 90052 0	NAIS-300L Class-B AIS with NMEA 2000® interface (GPS antenna included)	€ 799.00

Note: VHF antenna needs to be ordered separately

Accessories

Part Number	Barcode	Description	RRP
NAIS-300			
000-0124-69	0 42194 53349 0	NMEA 2000 starter kit - Backbone required to install one or more NMEA 2000 sensors; includes power cable, 2-ft cable, 15-ft cable, 2 x T-connector, network terminators. Required only if NAIS-300L is the only sensor on the network.	€ 49.98
NMEA2000 Accessories			
000-0119-79	0 42194 52967 7	N2K-T-RD - NMEA 2000® T-connector for connection of additional display	€ 16.32
000-0119-88	0 42194 52976 9	N2KEXT-2RD - 0.61 m (2-ft) NMEA 2000® cable for network extension or connection to additional display	€ 26.52
000-0127-53	0 42194 53358 2	N2KEXT-6RD - 1.82 m (6-ft) NMEA 2000® cable for network extension or connection to additional display	€ 41.82
000-0119-86	0 42194 52974 5	N2KEXT-15RD - 4.55 m (15-ft) NMEA 2000 cable for network extension or connection to additional display	€ 46.92
000-0119-83	0 42194 52971 4	N2KEXT-25RD - 7.58 m (25-ft) NMEA 2000 cable for network backbone extension only	€ 58.14

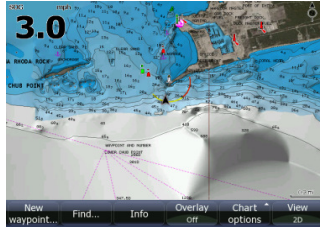
Note: A VHF AIS antenna with PL259 is required for AIS operation.

Navionics



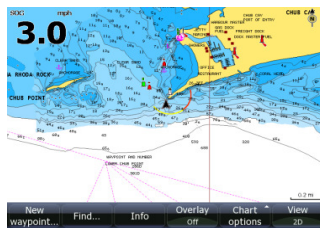
Navionics Electronic Charts comprise the world's largest "seamless" marine electronic chart database. Navionics charts are available in a variety of formats, including PLATINUM+™, PLATINUM™, GOLD™ and CLASSIC™.

For Americas, EMEA and ROW :



Platinum + Charts

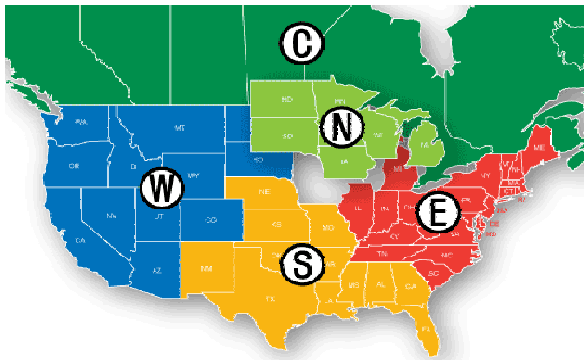
Multi-dimensional marine charts that offer navigators and fishermen a selection of bonus information beyond the best available navigation charts such as panoramic pictures, 3D/2D views with satellite imagery, coast pilot guides, POIs & built-in offshore fishing detail!



Gold Charts

2-dimensional Gold marine charts are the navigation standard for serious mariners and fishermen offering the largest coverage areas for the widest range of today's most popular chartplotters. Features include tides, currents, wrecks, port plans, marsh areas, marine services, coastal roads, and much more. Whether you are on the water or planning a trip, Navionics Gold charts can take you there.

For Americas only:



HotMaps Premium

More than 17,000 total lake maps with complete fishing information for your GPS, plus over 1,000 high-definition lake maps featuring exclusive 1' contours from Navionics own on-the-water surveys.

Choose from 5 huge throughout the US and Canada on a media card compatible with your chartplotter.

North & South Dakota are included in both **West** and **North** Regions.
Michigan is included in both **North** and **East** Regions.
South Region also includes Gulf Coast marine data.

Region # Coverage Premium Code

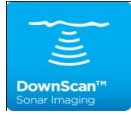
- NORTH IA, MI, MN, WI, ND, SD
- SOUTH AL, AR, FL, GA, KS, LA, MO, MS, NE, NM, OK, TX
- EAST CT, DE, IL, IN, KY, MA, MD, ME, MI, NC, NH, NJ, NY, OH, PA, RI, SC, TN, VA, VT, WV
- WEST AZ, CA, CO, ID, MT, ND, NV, OR, SD, UT, WA, WY
- CANADA AB, BC, MB, NB, NS, ON, QC, SK

HotMaps Platinum

More than 17,000 total lake maps with complete fishing information for your GPS, plus over 1,000 high-definition lake maps featuring **3D View, Panoramic Lake Photos, Top-down Satellite Imagery, and exclusive 1' contours** from Navionics own on-the-water surveys.

DownScan Imaging™ Sonar

Never before has a fishfinder shown so much for so little. With the DSI technology, see fish, structure, bottom hardness or thermoclines.



Main Features

Elite DSI Series

- 4000 watts of PtP DSI power
- 5" SolarMAX™ 256-color TFT 480x480 display
- Quick release mount
- TrackBack™

Mark DSI Series

- 4000 watts of PtP DSI power
- 480x480 pixels with 16 level grayscale super twist monochrome display
- Quick release mount
- TrackBack™



Elite-5 DSI



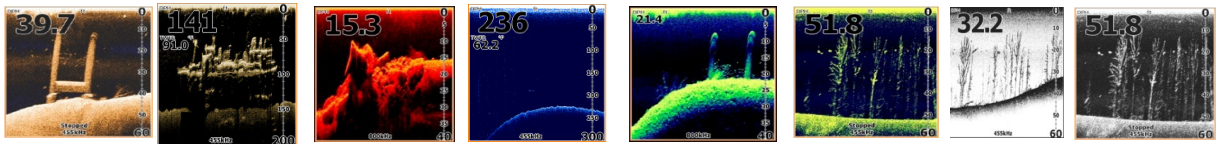
Elite-5x DSI



Mark-5x DSI



Mark-5x DSI Portable



Main Products

Part Number	Barcode	Description	RRP
Elite Series			
000-10236-003	0 42194 53583 8	Elite-5 DSI [^] - Combination fishfinder/chartplotter color 455/800 KHz. Includes DSI Skimmer® transducer with temperature	€ 599.00
000-10236-001	0 42194 53578 4	Elite-5 DSI - Combination fishfinder/chartplotter color 455/800 KHz. Includes DSI Skimmer® transducer with temperature	€ 636.27
000-10235-001	0 42194 53577 7	Elite-5x DSI - Fishfinder color 455/800 KHz. Includes DSI Skimmer® transducer with temperature	€ 479.00
Mark Series			
000-10233-001	0 42194 53575 3	Mark-5x DSI - Fishfinder 455/800KHz. Included DSI transducer with Temp	€ 249.00
000-10234-001	0 42194 53576 0	Mark-5x DSI Portable Soft sided portable case with suction cup skimmer transducer	€ 399.00

[^] Europe, Middle East and Africa -optional Navionics Gold maps are available to download from the Navionics web site portal. A 2GB micro-SD card is included with base chartplotter units.

Accessories

Part Number	Barcode	Description	RRP
Transducers/Transducer Cables			
000-10260-001	0 42194 53593 7	Dual frequency DSI Skimmer® transducer 455/800kHz with built in temp. Includes 20ft cable, mounting bracket and hardware.	€ 65.00
000-10261-001	0 42194 53594 4	Low profile trolling motor mount for use with DSI Skimmer transducer. Includes trolling motor snap on mount, stainless steel trolling motor clamp, and 2 zip ties.	€ 20.00
000-10262-001	0 42194 53595 1	Replacement mount for DSI Skimmer and top housing.	€ 25.00
000-10263-001	0 42194 53596 8	15ft extension cable for DSI skimmer transducer.	€ 25.00

Digital Sonar

Innovation and technology come together in two exciting new lines of easy-to-use and nicely-affordable marine electronics -both packed with legendary Lowrance features. From higher-detail 480x480 pixel target definition, to a simply smarter new case design, and simplified operation, all are a dream come true for value-conscious anglers and boaters alike.



Main Features

Elite Series

- 480x480 pixels on solar max enhanced 256 color display
- Internal 16-channel GPS antenna (chartplotter models)
- Navionics Gold compatibility (chartplotter models)
- Best-in-class Lowrance digital sonar performance
- Quick release tilt and swivel bracket

Mark Series

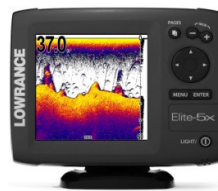
- 480x480 pixels with 16 level grayscale super twist monochrome display
- Best-in-class Lowrance digital sonar performance
- Quick release tilt and swivel bracket



Elite-5



Elite-5m



Elite-5x



Mark-5x PRO



Mark-5x

Main Products

Part Number	Barcode	Description	RRP
Elite Series			
000-00104-002	0 42194 53566 1	Elite-5 Base^ - Combination fishfinder/chartplotter color 83/200 kHz. Includes Skimmer® transducer with temperature and downloadable Navionics bundle.	€ 529.00
000-00104-001	0 42194 53488 6	Elite-5 Base - Combination fishfinder/chartplotter color 83/200 kHz. Includes Skimmer® transducer with temperature and downloadable Navionics bundle.	€ 518.63
000-00145-002	0 42194 53487 9	Elite-5m Base^ - Chartplotter color with downloadable Navionics bundle.	€ 399.00
000-00102-001	0 42194 53485 5	Elite-5x - Fishfinder color 83/200kHz. Includes Skimmer® transducer with temperature.	€ 424.15
Mark Series			
000-00175-001	0 42194 53484 8	Mark-5x Pro - Fishfinder mono 83/200kHz. Includes Skimmer® transducer with temperature.	€ 202.98
000-00100-001	0 42194 53482 4	Mark-5x - Fishfinder mono 200kHz. Includes Skimmer® transducer with temperature.	€ 172.38
000-00101-001	0 42194 53483 1	Mark-5x Portable - Fishfinder mono 200 - Portable. Soft sided carry case with suction cup skimmer transducer with Temp	€ 253.98

^ Europe, Middle East and Africa -optional Navionics Gold maps are available to download from the Navionics web site portal. A 2GB micro-SD card is included with base chartplotter units.

Accessories

Part Number	Barcode	Description	RRP
Transducers with uniplug connector			
000-0106-48	0 42194 52198 5	HST-WSU 83/200kHz skimmer transducer with temp and 20ft cable	€ 61.20
000-10248-001	9420024108499	BT-THU - Bronze Thru Hull 83/200Khz depth/temp w 45/12° Beamwidths, 12m cable	€ 199.00
000-0106-69	0 42194 52262 3	PDRT-WSU - 83/200kHz pod style transducer with remote temp and 20ft cable	€ 67.00
000-0106-52	0 42194 52202 9	PD-WSU - 83/200kHz pod style transducer no temp with 20ft cable	€ 61.20
000-0106-50	0 42194 52200 5	PDT-WSU - 83/200kHz pod style transducer with temp and 10ft cable	€ 61.20
000-0106-68	0 42194 52279 1	PTI-WSU - 83/200kHz Ice transducer with 7ft cable	€ 91.80
000-0099-77	0 42194 52206 7	TS-2U - Temp Sensor for Mark and Elite	€ 51.00
000-0099-75	0 42194 52204 3	ST-TU - Transom paddle wheel with temp	€ 71.40
000-0099-91	0 42194 52291 3	XT-15U - 15ft Sonar extension cable	€ 26.00
000-10028-001	0 42194 53503 6	FM-ME5 - Elite/Mark flush mount kit for 5" models	€ 15.30
000-0106-98	0 42194 52888 5	Epoxy 6 pack	#N/A
Portable packs			
000-10030-001	0 42194 53505 0	PPP-17 - Elite/Mark portable power pack for 5" models	€ 99.00
000-10209-001	0 42194 53570 8	PPP-18I - Elite/Mark Icefish bag with transducer	€ 149.00
000-10427-001	942002411109 3	Battery charger AC adaptor for Ice fishing kit	€ 29.95
GPS Antenna			
000-00146-001	0 42194 53504 3	LGC-16W - Elite GPS Antenna -20ft cable	€ 69.00
Adaptor and extension cables			
000-10606-001	942002411470 4	kayak Scupper Hole Transducer mount - Universal kayak scupper hole transducer bracket for 83/200 Skimmer™ and DSI transducers - Available October 2011	€ 39.95
000-10052-001	0 42194 53518 0	TA-UQ2BL-T - Uniplug transducer to Blue Unit	€ 30.60
000-0127-66	0 42194 53397 1	TA-BL2U-T -Blue transducer to Uniplug Unit	€ 30.00
000-0119-31	0 42194 52738 3	NDC-4 - NMEA 0183 Adaptor Cable	€ 20.40
000-0099-83	0 42194 52227 2	PC-24U Power Cable for Elite-5m	€ 20.40
Covers and mounting brackets			
000-10454-001	79344200107 9	RAM 1-1/2" ball mounting bracket for Mark/Elite units	€ 61.20
000-10455-001	79344210107 6	RAM 1" ball mounting bracket for Mark/Elite units	€ 40.00
000-10027-001	0 42194 53493 0	QRB-5 Bracket for Mark-5 and Elite-5 Models	€ 20.40
000-10050-001	0 42194 53516 6	CVR-16 - Screen Cover- fits all Mark and Elite 5" models	€ 18.00

Digital Sonar

Compact sonar or GPS with great features at an incredible price!



X-67c



X-67c IceMachine



X-52



X-59 DF

Main Features

- X-67c and X-67c Ice Machine - compact color fishfinders with stunning sunlight viewability
- X-52 and X-59 - compact mono fishfinders with NMEA2000 networking and choice of 200 kHz or 50/200 kHz sonar
- M-52i - compact mono fishfinder with in built GPS chartplotter



M-52i

Main Products

Part Number	Barcode		RRP
X-67c			
000-01110-502	0 42194 52235 7	X-67c 3.5" color fishfinder, with 200 kHz Skimmer® Transducer	€ 322.32
X-59 DF			
000-01110-632	0 42194 52499 3	X-59 DF 4" mono fishfinder with NMEA 2000®, 50/200 kHz Skimmer® Transducer	€ 250.42
X-52			
000-01110-612	0 42194 52497 9	X-52 4" mono fishfinder with NMEA 2000®, 200 kHz Skimmer® Transducer	€ 204.00
M-52i			
000-01116-091	0 42194 52397 2	M-52i S/GPS 4" mono combination fishfinder/chartplotter 200kHz Skimmer® Transducer	€ 263.55
Portable Packs			
000-10209-001	0 42194 53570 8	PPP-18l -Elite/Mark Icefish bag with transducer	€ 149.00
000-10427-001	942002411109 3	Battery charger AC adpctor for Ice fishing kit	

X-4 Series

Simple to use with excellent performance and resolution. The Lowrance X-4 Pro features the 83/200 KHz dual-search technology for optimum fishfinding performance in both shallow and deep waters!



Main Products X-4 Portable

Main Features

- Super sunlight-viewable 240V x 160H pixel 10.2 cm (4") Film SuperTwist LCD display
- Hands-free ASP™ operation, GRAYLINE®, Advanced Fish I.D.™, FishTrack™
- Sealed and waterproof with manufacturers full one-year warranty

Lowrance X-4 and X-4 Portable

- High-speed 200 kHz Skimmer® transducer with built-in temp sensor and depths to 183 m (600-ft)
- Lowrance X-4 portable comes with Porta-Power Pack case and portable 200 kHz Skimmer® transducer with suction-cup mounting bracket (batteries not included).

Lowrance X-4 Pro

- Dual 83/200 kHz sounding for superb target detail and separation from shallow water to 244 m (800-ft)
- Compact Dual-Search Skimmer® transducer with dual beams producing up to 120° of fish finding coverage
- Built-in temp sensor
- High-speed screen updates and back-up memory

Part Number	Barcode	Description	RRP
X-4 Series			
000-10227-001	0 42194 53572 2	Lowrance X-4 - 4-level grayscale fishfinder with 200kHz Skimmer® transducer.	€ 84.00
000-10229-001	0 42194 53574 6	Lowrance X-4 Pro - 4-level grayscale fishfinder with dual-search 83/200kHz Skimmer® transducer.	€ 99.00
000-10228-001	0 42194 53573 9	Lowrance X-4 Portable - 4-level grayscale fishfinder with suction cup 200kHz Skimmer® transducer packed with a soft sided portable kit.	€ 139.00

Accessories

Part Number	Barcode	Description	RRP
Transducers/Transducer Cables			
000-0106-48	0 42194 52198 5	HST-WSU transom mount Skimmer® transducer with built-in temperature. 20ft cable.	€ 61.20
000-10248-001	9420024108499	BT-THU - Bronze Thru Hull 83/200Khz depth/temp w 45/12° Beamwidths, 12m cable	€ 199.00
000-0106-50	0 42194 52200 5	PDT-WSU trolling motor mount, 20° skimmer (200kHz) with built-in temperature sensor. 10ft cable.	€ 61.20
000-0106-69	0 42194 52262 3	PDRT-WSU - Shoot-thru-hull mount, 20 degree pod type with remote temperature (200 kHz), includes 20 ft power cable	€ 67.00
000-0127-66	0 42194 53397 1	TA-BL2U-T Blue transducer to Uniplug transducer with temperature.	€ 30.00
000-0099-91	0 42194 52291 3	XT-15U 15' transducer extension cable. Includes power lead.	€ 26.00
000-0106-98	0 42194 52888 5	Epoxy 6 pack	
Mounting Accessories			
000-0113-20	0 42194 52228 9	FM-6 flush mount kit	€ 16.32
000-0113-26	0 42194 52280 7	GBSA-3 gimbal bracket swivel adapter	€ 18.36
Portable Accessories			
000-10209-001	0 42194 53570 8	PPP-18I -Elite/Mark Icefish bag with transducer	€ 149.00
000-10030-001	0 42194 53505 0	PPP-17 - Elite/Mark portable power pack for 5" models	€ 99.00
000-0051-52	0 42194 50250 2	Suction cup bracket for portable use. Fits HST-WSU transducer.	€ 16.32
000-10427-001	942002411109 3	Battery charger AC adpctor for Ice fishing kit	€ 29.95

Accessories

Part Number	Barcode	Description	RRP
Blue-connector Airmar Transducers (Compatible with X-52 and X-59 only)			
000-0136-02	0 42194 53359 9	P319 Plastic low profile 600W thru-hull 50/200 kHz depth/temp with 45/12° beamwidths	€ 169.00
000-0136-03	0 42194 53360 5	P79 Plastic 600W in-Hull 50/200 kHz depth only with 45/12° beamwidths	€ 125.00
000-0046-26	0 42194 52426 9	SB-9BL - Switch box to connect 2 blue connector transducers to one sonar unit	€ 130.00
000-10116-001	942002410795 9	TM260 Plastic Transom Mount 50/200Khz 1kW Depth/Temp w 19/6° Beamwidths, 12m cable	€ 999.00
NMEA 2000® Sensors (Compatible with X-52 and X-59 only)			
000-0120-39	0 42194 52990 5	EP-60R - Fuel flow sensor, with 10-ft cable and T-connector	€ 90.78
000-0120-41	0 42194 52987 5	EP-65R - Fluid level sensor, with 10-ft cable and T-connector	€ 80.58
000-0120-49	0 42194 52988 2	EP-70R - Transom mount paddlewheel speed sensor, with 10-ft cable and T-connector	€ 80.58
000-0120-51	0 42194 52989 9	EP-80R TM - Transom mount temperature sensor, with 10-ft cable and T-connector	€ 80.58
000-0120-53	0 42194 53002 4	EP-80R TH - Thru-hull temperature sensor, with 10-ft cable and T-connector	€ 80.58
000-0120-73	0 42194 53190 8	EP-85R - Fuel usage/range storage sensor for Evinrude engines, with 10-ft cable and T-connector	€ 80.58
000-0120-29	0 42194 52900 4	EP-90R - Pressure sensor, with 10-ft cable and T-connector	€ 90.78
000-0120-62	0 42194 53039 0	Evinrude engine interface cable 15-ft and T-connector	€ 80.58
000-0120-37	0 42194 52982 0	Yamaha engine interface cable 15-ft and T-connector	€ 80.58
Note: Suzuki engine interface and adaptor cables available direct from Suzuki			
Mercury/Mercruiser/Mariner engine NMEA2000 compatible SmartMonitor gauges and accessories available direct from Mercury			
000-0124-69	0 42194 53349 0	NMEA 2000 starter kit - Backbone required to install one or more NMEA 2000 sensors; includes power cable, 2-ft cable, 15-ft cable, 2 x T-connector, network terminators	€ 49.98
000-0127-52	0 42194 53357 5	TR-120-KIT - Set of 1 male and 1 female NMEA 2000® terminators	€ 15.30
000-0119-79	0 42194 52967 7	N2K-T-RD - NMEA 2000® T-connector for connection of additional display	€ 16.32
000-0119-88	0 42194 52976 9	N2KEXT-2RD - 0.61 m (2-ft) NMEA 2000® cable for network extension or connection to additional display	€ 26.52
000-0127-53	0 42194 53358 2	N2KEXT-6RD - 1.82 m (6-ft) NMEA 2000® cable for network extension or connection to additional display	€ 41.82
000-0119-86	0 42194 52974 5	N2KEXT-15RD - 4.55 m (15-ft) NMEA 2000 cable for network extension or connection to additional display	€ 46.92
000-0119-83	0 42194 52971 4	N2KEXT-25RD - 7.58 m (25-ft) NMEA 2000 cable for network backbone extension only	€ 58.14
000-0119-75	0 42194 52964 6	N2K-PWR-RD - NMEA 2000® power node (cable + T connector); to upgrade LMS/LCX/GlobalMap series network to HDS system	€ 48.96
000-0127-05	0 42194 53045 1	NAC-FRD2FBL - Adapter cable to enable connection of a red or black NMEA 2000® device to a blue network	€ 24.48

Accessories (Continued)

Part Number	Barcode	Description	RRP
Mounting Brackets And Flushmount Kits			
000-0113-26	0 42194 52280 7	GBSA-3 - Swivel mount adapter for use with GB-17	€ 18.36
000-0113-20	0 42194 52228 9	FM-6 - Flush mount kit for X-4, X-4 Pro X-67c, M-52 and M-68c	€ 16.32
000-0113-03	0 42194 52107 7	FM-4 - Flush mount kit for X-52, X-59 DF	€ 16.32
000-10030-001	0 42194 53505 0	PPP-17 - Elite/Mark portable power pack for 5" models	€ 99.00
000-10209-001	0 42194 53570 8	PPP-18l - Elite/Mark Icefish bag with transducer	€ 149.00
000-0051-52	0 42194 50250 2	Suction Cup Kit - Suction cup kit for portable skimmer transducers	€ 16.32
000-0051-83	0 42194 50312 7	GBSA-1 - Swivel mount adapter for use with GB-13, GB-14, GB-19	€ 16.32
Adaptor/Extension Cables and Switch Boxes			
000-0119-31	0 42194 52738 3	NDC-4 - NMEA-0183 output cable for M-52, M-68c	€ 20.40
000-0099-91	0 42194 52291 3	XT-15U - 15ft uniplug extension cable	€ 26.00
000-0099-94	0 42194 52424 5	20 ft transducer extension cable (50 kHz or 200 kHz)	€ 40.80
000-0127-66	0 42194 53397 1	TA-BL2U-T Blue transducer to Uniplug transducer with temperature.	€ 30.00
000-10052-001	0 42194 53518 0	TA-UQ2BL-T - Uniplug transducer to Blue Unit	€ 30.60
000-0099-44	0 42194 51718 6	AC-CAF - AC power adapter to female cigarette lighter socket for power from 120V wall socket	€ 35.00
Sensors and Transducers			
000-0106-48	0 42194 52198 5	HST-WSU - 200 kHz transom-mount skimmer depth/temp with uniplug connector for M-52, X-67c, X-4 and X-4 Pro	€ 61.20
000-0106-50	0 42194 52200 5	PDT-WSU - Trolling-motor mount, 20 degree pod type with built in temperature sensor (200 kHz), includes 10 ft power cable	€ 61.20
000-0106-69	0 42194 52262 3	PDRT-WSU - Shoot-thru-hull mount, 20 degree pod type with remote temperature (200 kHz), includes 20 ft power cable	€ 67.00
000-0106-52	0 42194 52202 9	PD-WSU - Trolling motor mount or shoot-thru-hull, 20 degree pod type (200 kHz), includes 20 ft power cable	€ 61.20
000-10248-001	9420024108499	BT-THU - Bronze Thru Hull 83/200Khz depth/temp w 45/12° Beamwidths, 12m cable	€ 199.00
000-0106-98	0 42194 52888 5	Epoxy 6 pack	#N/A

Spare Parts

Part Number	Barcode	Description	RRP
Sensors and Transducers			
000-0099-77	0 42194 52206 7	TS-2U - Second temp sensor for use with all uniplug and quarter-turn products except Cuda, FishEasy 245DS, X-4 and X-4 Pro	€ 51.00
000-0099-75	0 42194 52204 3	ST-TU - Transom mount paddlewheel speed/temp sensor for M-52, X-67c	€ 71.40
000-0106-94	0 42194 52711 6	PTI-WBL - Ice transducer with blue connector for X-52, X-59 DF	€ 81.60
000-0106-68	0 42194 52279 1	PTI-WSU - Ice transducer with uniplug connector for M-52, X-67	€ 91.80
000-0127-50	0 42194 53354 4	FUSE-1 - 3 amp fuses (set of 3)	€ 15.30
Mounting Brackets And Flushmount Kits			
000-0099-06	0 42194 50499 5	HS-WS-SS Mtg Kit - Mounting kit for transom mount 83/200 kHz skimmer transducers	€ 16.32
000-0113-16	0 42194 52195 4	GB-17 - Gimbal bracket for X-67c, M-52, M-68c	€ 24.00
000-0101-98	0 42194 52102 2	GB-13 - Gimbal bracket for X-52 and X-59 DF	€ 20.40
000-0113-02	0 42194 52106 0	GK-10 - Bracket knobs for X-52 and X-59 DF	€ 20.40
Cables and Connectors			
000-0099-83	0 42194 52227 2	PC-24U - Power cable for X-67c, M-68c, X-96	€ 20.40

Solutions for Kayaks

Presenting the ultimate transducer-mounting system for the sit-on-top fishing kayak, to take full advantage of Lowrance's innovative fishfinding technology and performance. The new Transducer Kayak Scupper Mount is perfect for all HDS®, Elite™, Mark™, and X-Series Lowrance Skimmer® transducers, both 83/200 kHz and 455/800 kHz DownScan Imaging™ (DSI) models alike ... as well as earlier 1-inch 200 kHz transducers. It's easy to install in most any scupper opening, with few tools, and without messy adhesives as with shoot-thru-hull transducer mountings. Best of all, the new Lowrance Scupper Mount positions the Skimmer® transducer, so it's totally submerged in the water you're fishing. That guarantees maximum sonar signal return sensitivity, producing the absolute clearest underwater returns of structure and fish possible!



Kayak Scupper mount with 83/200 kHz Skimmer® transducer



Kayak Scupper mount with 455/800 kHz Skimmer® DSI transducer

Main Product

Part Number	Barcode	Description	RRP
Scupper Hole mount			
000-10606-001	942002411470 4	Kayak Scupper Hole Transducer mount - Universal kayak scupper hole transducer bracket for 83/200 Skimmer™ and DSI transducers - Available October 2011	€ 39.95

Accessories

Part Number	Barcode	Description	RRP
Transducers/Transducer Cables			
000-0106-72	0 42194 52404 7	HST-WSBL - 83/200 kHz transom-mount Skimmer® with built-in temp with blue connector	€ 63.24
000-0106-48	0 42194 52198 5	HST-WSU 83/200kHz skimmer transducer with temp and 20ft cable	€ 61.20
000-10260-001	0 42194 53593 7	Dual frequency DSI Skimmer® transducer 455/800kHz with built in temp. Includes 20ft cable, mounting bracket and hardware.	€ 65.00
Mounting Accessories			
000-10454-001	79344200107 9	RAM 1-1/2" ball mounting bracket for Mark/Elite units	€ 61.20
000-10455-001	79344210107 6	RAM 1" ball mounting bracket for Mark/Elite units	€ 40.00
000-0101-63	7 93442 00111 6	MB-8 - RAM 1-1/2" ball mounting bracket with 8" arm for 5"-8" units	€ 50.00
000-0124-74	0 42194 53365 0	MB-35 - RAM swing arm mounting bracket for 5"-8" units	€ 61.20
000-0124-75	0 42194 53366 7	MB-36 - RAM heavy duty 2-1/4" ball mounting bracket with short arm for 10" units	€ 102.00
Portable Accessories			
000-10209-001	0 42194 53570 8	PPP-18I -Elite/Mark Icefish bag with transducer	€ 149.00
000-10030-001	0 42194 53505 0	PPP-17 - Elite/Mark portable power pack for 5" models	€ 99.00
000-0051-52	0 42194 50250 2	Suction cup bracket for portable use. Fits HST-WSU transducer.	€ 16.32

LVR Series

For safety's sake, get in touch with the unbeatable quality, features, price and especially, the dependability of Lowrance Fixed-mount VHF marine communications.



LVR-880



LVR-250

Main Features

LVR-880

- Waterproof 25/1 W DSC VHF/FM Radio
- NMEA 2000® as well as NMEA 0183
- Track your buddy
- FM radio tuner with 2 watt stereo audio output
- 22 watt intercom/hailer, automatic fog signals
- Waypoint navigation and MOB
- SAME county weather warnings
- Oversized display and rotary channel knob
- Speaker mic with backlit keypad
- Automatic distress operation with high-resolution position polling and group calling via NMEA 0183 output to chartplotters. Full Class D DSC.

LVR-250

- Waterproof 25/1 W DSC VHF Radio
- Rotary channel knob
- Large display with navigation data display
- Microphone with speaker and keys
- Automatic distress operation with high-resolution position polling and group calling via NMEA 0183 output to chartplotters. Full Class D DSC

Main Products

Part Number	Barcode	Description	RRP
LVR-880			
000-0022-20	9420024107461	LVR-880U- Fixed mount VHF/FM radio with NMEA 2000® - USA	
000-0022-22	9420024107478	LVR-880E - Fixed mount VHF/FM radio with NMEA 2000® - EU	€ 202.98
LVR-250			
000-0022-19	9420024107447	LVR-250U - Fixed mount VHF radio - USA	
000-0022-21	9420024107454	LVR-250E - Fixed mount VHF radio - EU	€ 150.00
000-10237-001	9420024108413	LVR-250 CCS - Fixed mount VHF radio - CSS type approved	

Accessories

Part Number	Barcode	Description	RRP
Antennas			
AA000352	9420024104576	1.1 m stainless masthead whip antenna	
AA000223	9420024106648	VA-MTG-Nylon quick-fit antenna mount for VA2/VA2A (for use with LVR-250, LVR-880) with 5 m cable	
AA000224	9420024106655	VA-MTG-SS stainless steel quick-fit antenna mount for VA2/VA2A (for use with LVR-250, LVR-880) with 5 m cable	
AA000355	9420024104583	2.4 m (8-ft) fiberglass quick fit VHF antenna (for use with LVR-250, LVR-880)	
AA000358	9420024104606	1 m (3.3-ft) fiberglass quick fit VHF antenna (for use with LVR-250, LVR-880)	
Cables			
AA000400	9420024106686	5 m (16.4-ft) VHF extension cable	
NMEA 2000® Accessories (LVR-880 only)			
000-0125-28	0 42194 53369 8	LGC-4000 high sensitivity NMEA 2000® GPS WAAS antenna with 5 Hz update rate, included 15ft N2K cable and T-connector	€ 233.58
000-0124-69	0 42194 53349 0	NMEA 2000® starter kit - Backbone required to install one or more NMEA 2000® sensors; includes power cable, 2-ft cable, 15-ft cable, 2 x T-connector, network terminators	€ 49.98
000-0119-79	0 42194 52967 7	N2K-T-RD - NMEA 2000® T-connector for connection of additional network device	€ 16.32
000-0119-88	0 42194 52976 9	N2KEXT-2RD - 0.61 m (2-ft) NMEA 2000® cable for network extension or connection to additional network device	€ 26.52
000-0127-53	0 42194 53358 2	N2KEXT-6RD - 1.82 m (6-ft) NMEA 2000® cable for network extension or connection to additional network device	€ 41.82
000-0119-86	0 42194 52974 5	N2KEXT-15RD - 4.55 m (15-ft) NMEA 2000® cable for network extension or connection to additional network device	€ 46.92
000-0119-83	0 42194 52971 4	N2KEXT-25RD - 7.58 m (25-ft) NMEA 2000® cable for network backbone extension only	€ 58.14
Covers			
000-10001-001	9420024107706	CVR-12 - Sun Cover for LVR-250	€ 24.48
000-10002-001	9420024107713	CVR-13 - Sun Cover for LVR-880	€ 24.48

Spare Parts

Part Number	Barcode	Description	RRP
000-0127-50	0 42194 53354 4	FUSE-1 - 3 amp fuses (set of 3)	€ 15.30
000-0127-52	0 42194 53357 5	TR-120-KIT - Set of 1 male and 1 female NMEA 2000 terminators	€ 15.30

LHR Series



LHR-80U

LHR-80E

These handy, full-featured waterproof handheld radios are ideal for use in small boats and tenders and as a safety backup.

Main Features

- Waterproof 5/1 watt DSC Handheld VHF with Internal GPS
- It floats !
- 1400 mAh Lithium polymer battery with rapid charger
- High resolution 128 x 128 LCD
- Full function DSC (SC-101) (US/APAC models) ATIS (EU/UK)
- Track plotter with great circle navigation, up to 500 waypoints, and cursor control
- "Track your Buddy"/"Get Buddy" with MMSI input (US, APAC models)
- LL output from charger base (NMEA 0183 to chartplotter)
- Includes charging base with LED indicator, wall charger and adaptor

Main Products

Part Number	Barcode	Description	RRP
LHR-80			
000-0022-17	9420024107515	LHR-80U - Handheld VHF radio with GPS/DSC SC-101 - US	
000-0022-34	9420024107539	LHR-80A - Handheld VHF radio with GPS/DSC SC-101 - APAC	
000-0022-23	9420024107522	LHR-80E - Handheld VHF radio with GPS/ATIS - EU	€ 245.82
000-0022-47	0 42194 53335 3	LHR-80K - Handheld VHF radio with GPS/ATIS - UK	€ 245.82

Accessories

Part Number	Barcode	Description	RRP
000-0016-53	0 42194 53375 9	VBP-4 - 1400 mAh Li-ion polymer battery pack for LHR-80	€ 77.52
000-10010-001	9420024107799	VKIT-5 LHR80 Charging Cradle and 12v Cigarette Lighter Cable	€ 43.86

Spare Parts

Part Number	Barcode	Description	RRP
000-10016-001	9420024107850	HHA-3 - Antenna, LHR-80	€ 17.34
000-10017-001	9420024107867	MBC-1 Belt Clip, LHR-80	€ 12.00
000-10006-001	9420024107751	VKIT-1 LHR80 Charging Cradle and US Power Adaptor (110 VAC)	
000-10007-001	9420024107768	VKIT-2 LHR80 Charging Cradle and UK Power Adaptor (220 VAC)	€ 43.86
000-10008-001	9420024107775	VKIT-3 LHR80 Charging Cradle and EU Power Adaptor 220 VAC)	€ 43.86
000-10009-001	9420024107782	VKIT-4 LHR80 Charging Cradle and APAC Power Adaptor (220 VAC)	

Lowrance Digital Gauges

Lowrance offers a full array of gauges and sensors for NMEA 2000® networking for onboard systems monitoring. In addition, Lowrance offers a variety of stand-alone gauges for specific data-monitoring requirements, including depth and water temperature. LMF-200/400 are NMEA2000® certified, white backlighting, waterproof to IPx7, have customizable screens/pages, engine data including fuel economy readings etc.



LMF-400



LMF-200



LST-3800

Main Features

LMF-400

- NMEA 2000® multi-function display
- 64 mm (2.5") 132 x 132 pixel Film SuperTwist 4-level grayscale display with superb viewing in direct sunlight
- Advanced white LED screen backlighting
- Sealed and waterproof to IPX-7
- Fits standard 86 mm (3-3/8") diameter hole

LMF-200

- NMEA 2000® multi-function display
- 36 mm (1.4") 65 x 65 pixel Film SuperTwist 4-level grayscale display with superb viewing in direct sunlight
- Advanced white LED screen backlighting
- Sealed and waterproof to IPX-7
- Fits standard 55 mm (2-1/8") diameter hole

LST-3800

- Digital Depth/Temp
- High-contrast dot matrix display with advanced white LED backlighting
- Temp readings to nearest 0.1° F
- Temp sensor included
- Fits standard 55 mm (2-1/8") diameter hole
- Depth capable to 213 m (700 ft)

Main Products

Part Number	Barcode	Description	RRP
Digital Gauges			
000-0049-541	0 42194 52597 6	LMF-400 - NMEA 2000® gauge 4"	€ 253.98
000-0049-551	0 42194 52681 2	LMF-200 - NMEA 2000® gauge 2"	€ 192.78
000-0047-94	0 42194 52594 5	LST-3800 - Depth/temp gauge 2"	€ 223.38

NMEA 2000®

Accessories

Part Number	Barcode	Description	RRP
NMEA 2000® Sensors (compatible with LMF Gauges)			
000-0125-28	0 42194 53369 8	LGC-4000 high sensitivity NMEA 2000® GPS WAAS antenna with 5 Hz update rate, included 15ft N2K cable and T-connector	€ 233.58
000-0120-39	0 42194 52990 5	EP-60R - Fuel flow sensor, with 10ft cable and T-connector	€ 90.78
000-0120-41	0 42194 52987 5	EP-65R - Fluid level sensor, with 10-ft cable and T-connector	€ 80.58
000-0120-49	0 42194 52988 2	EP-70R - Transom mount paddlewheel speed sensor, with 10-ft cable and T-connector	€ 80.58
000-0120-51	0 42194 52989 9	EP-80R TM - Transom mount temperature sensor, with 10-ft cable and T-connector	€ 80.58
000-0120-53	0 42194 53002 4	EP-80R TH - Thru-hull temperature sensor, with 10-ft cable and T-connector	€ 80.58
000-0120-73	0 42194 53190 8	EP-85R - Fuel usage/range storage sensor for Evinrude engines, with 10-ft cable and T-connector	€ 80.58
000-0120-29	0 42194 52900 4	EP-90R - Pressure sensor, with 10-ft cable and T-connector	€ 90.78
000-0120-62	0 42194 53039 0	Evinrude engine interface cable 15-ft and T-connector	€ 80.58
000-0120-37	0 42194 52982 0	Yamaha engine interface cable 15-ft and T-connector	€ 80.58
Note: Suzuki engine interface and adaptor cables available direct from Suzuki			
Mercury/Mercruiser/Mariner engine NMEA2000 compatible SmartMonitor gauges and accessories available direct from Mercury			
NMEA 2000® Accessories (compatible with LMF Gauges)			
000-0124-69	0 42194 53349 0	NMEA 2000® starter kit - Backbone required to install one or more NMEA 2000® sensors; includes power cable, 2-ft cable, 15-ft cable, 2 x T-connector, network terminators	€ 49.98
000-0119-88	0 42194 52976 9	N2KEXT-2RD - 0.61 m (2-ft) NMEA 2000® cable for network extension or connection to additional network device	€ 26.52
000-0127-53	0 42194 53358 2	N2KEXT-6RD - 1.82 m (6-ft) NMEA 2000® cable for network extension or connection to additional network device	€ 41.82
000-0119-86	0 42194 52974 5	N2KEXT-15RD - 4.55 m (15-ft) NMEA 2000® cable for network extension or connection to additional network device	€ 46.92
000-0119-83	0 42194 52971 4	N2KEXT-25RD - 7.58 m (25-ft) NMEA 2000® cable for network backbone extension only	€ 58.14
000-0127-04	0 42194 53044 4	NAC-MRD2MBL- Adapter cable to enable connection of a blue NMEA 2000® device to a red or black network.	€ 24.48
000-0127-05	0 42194 53045 1	NAC-FRD2FBL - Adapter cable to enable connection of a red or black NMEA 2000® device to a blue network	€ 24.48
Transducer Accessories (compatible with LST-3800)			
000-0106-48	0 42194 52198 5	HST-WSU - Transom mount, 20 degree skimmer (200 kHz) with built-in temperature, includes 20 ft power cable	€ 61.20
000-10248-001	9420024108499	BT-THU - Bronze Thru Hull 83/200Khz depth/temp w 45/12° Beamwidths, 12m cable	€ 199.00
000-0106-69	0 42194 52262 3	PDRT-WSU - Shoot-thru-hull mount, 20 degree pod type with remote temperature (200 kHz), includes 20 ft power cable	€ 67.00
000-0106-68	0 42194 52279 1	PTI-WSU - Portable-mount, 20 degree ice fishing type (200 kHz), includes 7 ft power cable	€ 91.80
000-0106-52	0 42194 52202 9	PD-WSU - Trolling motor mount or shoot-thru-hull, 20 degree pod type (200 kHz), includes 20 ft power cable	€ 61.20
000-0106-50	0 42194 52200 5	PDT-WSU - Trolling-motor mount, 20 degree pod type with built in temperature sensor (200 kHz), includes 10 ft power cable	€ 61.20
000-0106-98	0 42194 52888 5	Epoxy 6 pack	#N/A

Spare parts

Part Number	Barcode	Description	RRP
Mounting Brackets And Flushmount Kits			
000-0099-06	0 42194 50499 5	HS-WS-SS Mtg Kit - Mounting kit for transom mount 83/200 kHz skimmer transducers	€ 16.32
000-10392-001	0 42194 53606 4	50/200kHz Skimmer™ transducer mounting kit	€ 12.24
Cables and Connectors			
000-0127-52	0 42194 53357 5	TR-120-KIT - Set of 1 male and 1 female NMEA 2000 terminators	€ 15.30

Lowrance Endura™ Series

Whether you're fishing, boating, hunting, geocaching, hiking, camping, biking, kayaking or any other outdoors activity, the new Lowrance Endura™ series of touch-screen GPS handhelds will help make the most of your adventure.



Endura™ Sierra



Endura™ Safari



Endura™ Out&Back

Main Features

- Unparalleled ease-of-use with a combination of touch-screen interface and "hot-key" physical buttons
- Multi-recreational with dedicated outdoor features and a large range of mapping options
- Multiple mounting options with two lanyard attachment points, handlebar mounts, etc
- Power standby mode saves battery while allowing ultra fast startup
- Enhanced GPS+WAAS positioning
- Now with area circulation
- MicroSD expansion slot supporting up to 32GB of additional storage for trails, geocaches, waypoints, pictures, etc.
- Mark waypoints using any of over 190 assorted outdoor icons

Sierra

- The Most Powerful and Complete Out-of-The-Box GPS Navigation Experience

Safari

- The Most Versatile Handheld GPS Navigator

Out&Back

- Sets The Standard In Affordable Ease-Of-Use

Main Products

Part Number	Barcode	Description	RRP
Endura™			
AA010223	9420024105900	Lowrance Handheld Sierra APAC	
AA010225	9420024105924	Lowrance Handheld Safari APAC	
AA010227	9420024102435	Lowrance Handheld Out&Back APAC	
000-0125-40	0 42194 53390 2	Lowrance Handheld Sierra NA	
000-0125-39	0 42194 53389 6	Lowrance Handheld Safari NA	
000-10282-001	0 42194 53597 5	Lowrance Handheld Safari NA with Fishing Spot US Bundle	
000-0125-38	0 42194 53388 9	Lowrance Handheld Out&Back NA	
000-0125-41	9420024102442	Lowrance Handheld Sierra EMEA	€ 349.00
000-0125-42	9420024102459	Lowrance Handheld Safari EMEA	€ 269.00
000-0125-43	9420024102466	Lowrance Handheld Out&Back EMEA	€ 199.00

Accessories

Part Number	Barcode	Description	RRP
Endura™ Accessories			
000-00002-033	9420024107348	Endura mini USB and NMEA cable IPx4	
000-00002-034	9420024107355	Endura cradle and bike mount	
000-00002-035	9420024107362	Endura carrying case	
000-00002-036	9420024107584	Endura cigarette lighter power cable IPX4	
000-0127-41	0 42194 53262 2	PAC-9 AC adaptor for Endura	€ 25.50
000-10207-001	942002411149 9	Endura Battery door	€ 20.40

Cartography

Part Number	Barcode	Description	RRP
Endura™ Cartography - US			
000-00002-014	9420024107157	Lowrance outdoor US - NorthEast	
000-00002-015	9420024107164	Lowrance outdoor US - SouthEast	
000-00002-016	9420024107171	Lowrance outdoor US - South	
000-00002-017	9420024107188	Lowrance outdoor US - Great Lakes	
000-00002-018	9420024107195	Lowrance outdoor US - Mid West	
000-00002-019	9420024107201	Lowrance outdoor US - West	
000-00002-020	9420024107218	Lowrance outdoor US - Rockies	
000-10564-001	9420024107317	Lowrance outdoor TBT USA / Canada / Mexico	
Endura™ Cartography - EUROPE			
000-00002-031	9420024107324	Lowrance outdoor TBT W&E EUR	
000-00002-021	9420024107225	Lowrance outdoor GER	
000-00002-025	9420024107263	Lowrance outdoor AUT	
Endura™ Cartography - AUSTRALIA / NEW ZEALAND			
000-00002-032	9420024107331	Lowrance outdoor TBT Aus and NZ	
000-10178-001	0 42194 53565 4	Lowrance outdoor Aus/NZ	

Endura™ model comparison



	Out&Back	Safari	Sierra
Preloaded Onboard Maps	Basic	Advanced	Premium
Built-in Road Network	Primary	Primary/Secondary	All
Topo Contour Interval (feet)	-	500	100
Add-on Maps	✓	✓	✓
Accepts GPX trail/POI data	✓	✓	✓
Geocaching Application	✓	✓	✓
Navigation Bearing Details	✓	✓	✓
3D Compass	-	✓	✓
Barometric Altimeter	-	✓	✓
Trip Recorder/Route Recording	✓	✓	✓
Power Standby Mode	✓	✓	✓
Picture Viewer	✓	✓	✓
MP3 Player	-	✓	✓
Video Player	-	✓	✓
Headset Jack & Speaker	-	✓	✓
Microphone	-	✓	✓
Road Turn-by-Turn	-	optional	optional
(with voice prompts)			
Uses up to 32GB microSD cards	✓	✓	✓
(not included)			
Mini USB data/power port	✓	✓	✓
Waterproof	✓	✓	✓
(IPX7) with rubber armoring			
Waypoints: 4000		Geocaches: 4,000	
Trails: 100		Waypoints per Trail: 10,000	
Routes: 500		Waypoints per Route: 250	

Eagle Cuda® 350i

An incredible value in a sonar/GPS chartplotter combo with built-in mapping. Find fish, yourself, and your way, even in rain or fog, while marking spots and recording trails for return trips. All in this one easy-to-use and affordable sonar/mapping GPS package!



Cuda® 350i

Main Features

- 800 W peak-to-peak/100 W RMS with depths to 183 m (600-ft)
- Compact 200 kHz Skimmer® transducer with built-in temp sensor and up to 60° of fish detection coverage
- Space-saving case design with internal 12-parallel channel GPS antenna
- Built-in world background map
- Saves up to 1,000 waypoints and event markers each
- Up to 100 savable plot trails
- Full one-year warranty

Main Products

Part Number	Barcode	Description	RRP
000-0116-38	0 42194 10441 6	Cuda® 350i 4" mono combination fishfinder/chartplotter 200 - International	€ 260.10

Eagle FishEasy® 350c

Astounding daylight color and fishfinder performance in this incredibly affordable compact package exclusively from Eagle!



FishEasy® 350C

Main Features

- New, brighter 8.9 cm (3.5") diag. 320V x 240H pixel, 256-colour, active matrix TFT display is now even more viewable even in direct sunlight
- 200 kHz Skimmer® transducer has built-in temp sensor and up to 60° of wider fish detection coverage
- COLORLINE™ feature improves target definition and defines bottom composition
- Adjustable ping speed and automatic HyperScroll™ features display fish targets at higher boat speeds
- High-speed screen updates
- Sealed and waterproof with manufacturers full one-year warranty

Main Product

Part Number	Barcode	Description	RRP
000-0123-59	0 42194 10442 3	FishEasy® 350c 3.5" color fishfinder 200	€ 199.00

Accessories

For: FishEasy® 350c, Cuda® 350i

Part Number	Barcode	Description	RRP
Uniplug-connector Transducers			
000-0106-48	0 42194 52198 5	HST-WSU - Transom mount, 20 degree skimmer (200 kHz) with built-in temperature, includes 20 ft power cable	€ 61.20
000-10248-001	9420024108499	BT-THU - Bronze Thru Hull 83/200Khz depth/temp w 45/12° Beamwidths, 12m cable	€ 199.00
000-0106-69	0 42194 52262 3	PDRT-WSU - Shoot-thru-hull mount, 20 degree pod type with remote temperature (200 kHz), includes 20 ft power cable	€ 67.00
000-0106-68	0 42194 52279 1	PTI-WSU - Portable-mount, 20 degree ice fishing type (200 kHz), includes 7 ft power cable	€ 91.80
000-0106-50	0 42194 52200 5	PDT-WSU - Trolling-motor mount, 20 degree pod type with built in temperature sensor (200 kHz), includes 10 ft power cable	€ 61.20
000-0106-52	0 42194 52202 9	PD-WSU - Trolling motor mount or shoot-thru-hull, 20 degree pod type (200 kHz), includes 20 ft power cable	€ 61.20
000-0106-98	0 42194 52888 5	Epoxy 6 pack	
Adaptor/extension cables and switch boxes			
000-0099-91	0 42194 52738 3	XT-15U - 15-ft uniplug extension cable	€ 26.00
000-0099-44	0 42194 51718 6	AC-CAF - AC power adapter to female cigarette lighter socket for power from 120 V wall socket	€ 35.00
Display mounting brackets and kits			
000-0113-26	0 42194 52280 7	GBSA-3 - Swivel mount adapter for use with GB-17	€ 18.36
000-0113-20	0 42194 52228 9	FM-6 - Flush mount kit for 3.5-4" Eagle display products	€ 16.32
000-0051-52	0 42194 50250 2	Suction Cup Kit - Suction cup kit for portable skimmer transducers	€ 16.32

Spare Parts

FishEasy® 350c, Cuda® 350i

Part Number	Barcode	Description	RRP
Sensors and Transducers			
000-0099-77	0 42194 52206 7	TS-2U - Second temp sensor for use with all uniplug and quarter-turn products except Cuda, FishEasy 245DS, X-50DS	€ 60.52
000-0099-75	0 42194 52204 3	ST-TU - Transom mount paddlewheel speed/temp sensor	€ 84.75
000-0106-48	0 42194 52198 5	HST-WSU - 200 kHz transom-mount skimmer depth/temp with uniplug connector	€ 72.63
000-0106-68	0 42194 52279 1	PTI-WSU - Ice transducer with uniplug connector	€ 108.98
000-0127-50	0 42194 53354 4	FUSE-1 - 3 amp fuses (set of 3)	€ 13.27
Cables and Connectors			
000-0099-83	0 42194 52227 2	PC-24U - Power cable for all Eagle display products	€ 24.17
Mounting kits and brackets - Other			
000-0099-06	0 42194 50499 5	HS-WS-SS Mtg Kit - Mounting kit for transom mount 83/200 kHz skimmer	€ 14.48
000-0113-16	0 42194 52195 4	GB-17 - Gimbal bracket for all 3.5-4" Eagle display products	€ 24.17

Comparative Feature Matrix

LOWRANCE

Combination Fishfinder/Chartplotters

	HDS-10	HDS-8	HDS-7	HDS-5	Elite-5	Elite-5x/DSI	M-68c (US Only)
Warranty	2 Years				1 Year		
Display							
Size	10.4	8.0	6.4	5.0		3.5	
Type	Color TFT						color transfective
Resolution	SVGA 800 x 600		VGA 640 x 480	Custom square 480 x 480		QVGA 320 x 240	
Backlight type	White LED			CCFL		White LED	
Brightness	1,400		1,200	900	650		55.0
Enhancements	SolarMax +						na
User Interface and Installation							
Soft Keys	Yes			No			
FlyWheel™	Yes			No			
Cursor	8-way						
Keys	8: Zin, Zout, Exit, Enter, Menu, Pages, Wpt/Find, Power/Light				6: Zin, Zout, Enter, Menu, Pages, Power		8: Zin, Zout, Exit, Enter, Menu, Pages, Wpt, Power
Mounting	Front-mount or gimbal				Back-mount or gimbal		
Bracket	Standard				Quick Release Tilt/swivel		Quick release Tilt
Fishfinding							
Technology	Broadband				Lowrance Digital		
Frequencies/cone angles	50/83/200				83/200	455/800	200
Transducer Options	Transom mount skimmer with and with out Temperature, Trolling Motor / Inhull puck transducer with and without Temperature with range of Airmar Transducers			Works	Transom mount skimmer with and with out Temperature, Trolling Motor / Inhull puck transducer with and without Temperature	DSI Skimmer with Trolling motor clip option	Transom mount skimmer with and with out Temperature, Trolling Motor / Inhull puck transducer with and without Temperature
Connector	Blue -7 Pin				Quarter-turn Uniplug-6 Pin	DSI 6 pin	Quarter-turn Uniplug-6 Pin
Power (RMS)	Broadband				500	300	100
Max Depth	4,000+ 50/200kHz Airmar 2,500+ 50/200kHz Skimmer, 1,250+ 83/200 Skimmer				1,000	200	600
TrackBack™	Yes						No
Sonar/Structure Sharing	Yes				na		
StructureScan Trackback	Yes				na		
StructureScan panel split	Yes				na		
Chartplotting							
GPS	Internal high sensitivity				Internal		Internal
External GPS Option	LGC-4000				LGC-16W		No
Card slot	SD/MMC				Micro SD		No
Mapping - inbuilt	Insight USA™ or US basemap or WW basemap			Nautic Insight™, Lake Insight™, US basemap, or WW basemap	US basemap or WW basemap		US basemap
Mapping - options	Navionics Platinum +, HotMaps Platinum, Gold, Premium; Lakemaster ProMaps*, LakeMaster Insight*, Lake Insight HD, Nautic Insight HD, Fishing HotSpots Pro				Navionics HotMaps/Gold; Lakemaster*, FHS		No
NMEA0183 output to VHF	Yes						
Networking							
StructureScan	Yes				No		
Broadband Radar	Yes				No		
HD Digital Radar	Yes				No		
Sirius Weather/Audio	Yes				No		
Navico Expansion Port	Yes				No		
SonicHub™	Yes				No		
AIS	Yes (NMEA 2000 and NMEA 0183)				No		
LGC-4000 5Hz GPS	Yes				No		
NMEA 2000 Engines	Yes with proper adapter or gateway				No		
NMEA 2000 EP Sensors	Yes				No		
Simrad Heading Sensors	Yes				No		
Other Options							
ICE MACHINE	Accessory						
Portable	Accessory						
Kayak	No						
Temp/speed sensors	Accessory						

* These products remain readily available through LakeMaster Lake Map retail outlets listed under <http://www.lakemap.com/lakemasterdealerlocator.aspx>

Comparative Feature Matrix

LOWRANCE

Fishfinders

	HDS-5x	Elite-5x	Elite-5x/DSI	X-67c	Mark-5x Pro	Mark-5x	Mark-5x/DSI	X-52	X-4 Pro	X-4
Warranty	2 Years		1 Year							
Display										
Size	5.0			3.5	5.0			4.0		
Type	Color TFT			color transfective	mono 16 level grayscale					
Resolution	Custom square 480 x 480			QVGA 320 x 240	480 x 480			240 x 160		
Backlight type	CCFL			White LED					Lamp	
Brightness	900	650		55	60			15	1.5	
Enhancements	SolarMax +			na						
User Interface and Installation										
Soft Keys	No									
FlyWheel™	No									
Cursor	8-way			No	8-way			No		
Keys	8: Zin, Zout, Exit, Enter, Menu, Pages, Wpt/Find, Power/Light	6: Zin, Zout, Enter, Menu, Pages, Power		5: Up, Down, Menu/PWR/Enter/Pages, Exit	6: Zin, Zout, Enter, Menu, Pages, Power			4: Up/Down, Menu/PWR/Enter/Pages, Exit	5: Up, Down, Menu/PWR/Enter/Pages, Exit	
Mounting	Flush-mount or gimbal									
Bracket	Gimbal	Quick Release Tilt/swivel		Quick Release Tilt	Quick Release Tilt/swivel			Gimbal	Quick Release Tilt	
Fishfinding										
Technology	Broadband		Lowrance Digital							
Frequencies/cone angles	50/83/200	83/200	455/800	200	83/200	200	455/800	X-59 50/200, X-52 200	83/200	200
Transducer Options	Same as HDS	Transom mount skimmer with and with out Temperature, Trolling Motor / Inhull puck transducer with and without Temperature	DSI Skimmer with Trolling motor clip option	Transom mount skimmer with and with out Temperature, Trolling Motor / Inhull puck transducer with and without Temperature			DSI Skimmer with Trolling motor clip option	Same as HDS	Same as Mark and Elite Series	
Connector	Blue	Quarter-turn Unipl	DSI 6 pin	Quarter-turn Uniplug			DSI 6 pin	Blue	Quarter-turn Uniplug	
Power (RMS)	Broadband	500	300	100	300	200	300	300/188	188	100
Max Depth	Same as HDS	1,000	200	600	1,000	800	200	1,500/800	1,000	600
TrackBack™	Yes			No	Yes			No		
Sonar/Structure Sharing	Yes	na								
StructureScan Trackback	Yes	na								
StructureScan panel split	Yes	na								
Chartplotting										
GPS	na									
External GPS Option	LGC-4000*	na								
Card slot	na									
Mapping - inbuilt	na									
Mapping - options	na									
NMEA0183 output to VHF	Yes	No								
Networking										
StructureScan	Yes	No								
Broadband Radar	Yes	No								
HD Digital Radar	Yes	No								
Sirius Weather/Audio	No									
Navico Expansion Port	Yes	No								
SonicHub™	Yes	No								
AIS	No									
LGC-4000 5Hz GPS	Yes*	No								
NMEA2000 Engines	Yes with proper adapter or gateway	No						Yes	No	
NMEA2000 EP Sensors	Yes	No						Yes	No	
Simrad Heading Sensors	Yes	No								
Other Options										
ICE MACHINE	Accessory			ICE	Accessory					
Portable	Accessory					Kit		Accessory		
Kayak	Yes									
Temp/speed sensors	Accessory									

* Navigation data only.

Comparative Feature Matrix

LOWRANCE

Chartplotters

	HDS-7m	HDS-5m	Elite-5m
Warranty			
	2 Years		1 Year
Display			
Size	6.4	5.0	
Type	Color TFT		
Resolution	VGA 640 x 480	Custom square 480 x 480	
Backlight type	White LED	CCFL	
Brightness	1,200	900	650
Enhancements	SolarMax +		
User Interface and Installation			
Soft Keys	No		
FlyWheel™	No		
Cursor	8-way		
Keys	8: Zin, Zout, Exit, Enter, Menu, Pages, Wpt/Find, Power/Light		6: Zin, Zout, Enter, Menu, Pages, Power
Mounting	Front-mount or gimbal		Back-mount or gimbal
Bracket	Standard		Tilt/swivel
Fishfinding			
Technology			
Frequencies/cone angles			
Transducer Options	na		
Connector			
Power (RMS)			
Max Depth			
TrackBack™	Yes (when connected to sonar)		na
Sonar/Structure Sharing	Yes (when connected to sonar)		na
StructureScan Trackback	Yes (when connected to sonar)		na
StructureScan panel split	No		na
Chartplotting			
GPS	Internal high sensitivity		
GPS Option	LGC-4000		LGC-16W
Card slot	HDSD		Micro SD
Mapping - inbuilt	Insight USA™ or US basemap or WW basemap	Nautic Insight™, Lake Insight™, US basemap, or WW basemap	US basemap or WW basemap
Mapping - options	Navionics Platinum +, HotMaps Platinum, Gold, Premium; Lakemaster ProMaps, LakeMaster Insight, Lake Insight HD, Nautic Insight HD, Fishing HotSpots Pro		Navionics HotMaps/Gold; Lakemaster, FHS
NMEA0183 output to VHF	Yes		
Networking			
StructureScan	Yes		No
Broadband Radar	Yes		No
HD Digital Radar	Yes		No
Sirius Weather/Audio	Yes		No
Navico Expansion Port	Yes		No
SonicHub™	Yes		No
AIS	Yes (NMEA2000, NMEA0183)		No
LGC-4000 5Hz GPS	Yes		No
NMEA2000 Engines	Yes with proper adapter or gateway		No
NMEA2000 EP Sensors	Yes		No
Simrad Heading Sensors	Yes		No
Other Options			
ICE MACHINE	Accessory		
Portable	Accessory		
Kayak	No		Accessory
Temp/speed sensors	No		

Accessories - Compatible with select Legacy Lowrance products

Part Number	Barcode	Description	RRP
NMEA 2000® Sensors			
000-0125-28	0 42194 53369 8	LGC-4000 high sensitivity NMEA 2000® GPS WAAS antenna with 5 Hz update rate, included 15ft N2K cable and T-connector	€ 233.58
22090195	8 09190 33182 2	RC42 - Rate gyro fluxgate compass with 5m Simnet/N2K Cable (Simrad branded*). Required for MARPA operation	#REF!
000-0120-39	0 42194 52990 5	EP-60R - Fuel flow sensor, with 10ft cable and T-connector	€ 90.78
000-0120-41	0 42194 52987 5	EP-65R - Fluid level sensor, with 10-ft cable and T-connector	€ 80.58
000-0120-49	0 42194 52988 2	EP-70R - Transom mount paddlewheel speed sensor, with 10-ft cable and T-connector	€ 80.58
000-0120-51	0 42194 52989 9	EP-80R TM - Transom mount temperature sensor, with 10-ft cable and T-connector	€ 80.58
000-0120-53	0 42194 53002 4	EP-80R TH - Thru-hull temperature sensor, with 10-ft cable and T-connector	€ 80.58
000-0120-73	0 42194 53190 8	EP-85R - Fuel usage/range storage sensor for Evinrude engines, with 10-ft cable and T-connector	€ 80.58
000-0120-29	0 42194 52900 4	EP-90R - Pressure sensor, with 10-ft cable and T-connector	€ 90.78
000-0120-62	0 42194 53039 0	Evinrude engine interface cable 15-ft and T-connector	€ 80.58
000-0120-37	0 42194 52982 0	Yamaha engine interface cable 15-ft and T-connector	€ 80.58

Note: Suzuki engine interface and adaptor cables available direct from Suzuki

Mercury/Mercruiser/Mariner engine NMEA2000 compatible SmartMonitor gauges and accessories available direct from Mercury

Accessories - Compatible with select Legacy Lowrance products

Part Number	Barcode	Description	RRP
Blue-connector Transducers			
000-0106-71	0 42194 52403 0	HS-WSBL - 83/200 kHz Transom-mount depth-only Skimmer® with blue connector	€ 64.00
000-0106-72	0 42194 52404 7	HST-WSBL - 83/200 kHz transom-mount Skimmer® with built-in temp with blue connector	€ 63.24
000-0106-89	0 42194 52421 4	PDRT-WBL - 83/200 kHz trolling-motor mount skimmer with remote temp sensor with blue connector	€ 68.00
000-0106-73	0 42194 52405 4	PD-WBL - 83/200 kHz shoot-thru or trolling-motor mount depth only Skimmer® with blue connector	€ 60.00
000-0106-74	0 42194 52406 1	PDT-WBL - 83/200 kHz trolling-motor mount Skimmer® with built-in temp with blue connector	€ 81.60
000-0106-77	0 42194 52409 2	HST-DFSBL 50/200 kHz transom-mount Skimmer® with built-in temp with blue connector	€ 127.50
000-0099-95	0 42194 52428 3	TS-1BL - Temperature sensor with blue connector (non-networked)	€ 57.12
000-0099-96	0 42194 52429 0	SP-BL - Transom-mount paddlewheel speed sensor with blue connector (non-networked)	€ 66.00
000-0099-97	0 42194 52430 6	ST-TBL - Transom-mount paddlewheel speed/temp sensor with blue connector (non-networked)	€ 81.60
000-0051-45	0 42194 50192 5	TMB-S - Trolling-motor mount bracket for standard Skimmer® transducer	€ 16.32
000-10392-001	0 42194 53606 4	50/200kHz Skimmer™ transducer mounting kit	€ 12.24
000-0106-98	0 42194 52888 5	Epoxy 6 pack	#N/A
Blue-connector Airmar Transducers			
000-0136-02	0 42194 53359 9	P319 Plastic 600W low profile thru-hull 50/200 kHz depth/temp with 45/12° beamwidths - 12m	€ 169.00
000-0136-03	0 42194 53360 5	P79 Plastic 600W in-Hull 50/200 kHz depth only with 45/12° beamwidths - 12 m	€ 125.00
000-00021-001	0 42194 53443 5	B60 Bronze 600W thru-hull 50/200 kHz depth/temp with 45/12° beamwidths and 20° tilt - 12 m	€ 289.00
000-0136-05	0 42194 53362 9	B744V Bronze 600W thru-hull 50/200 kHz depth/temp/speed with 45/12° beamwidths and high speed fairing block - 12m	€ 399.00
000-0136-00	0 42194 53199 1	B258 Bronze 1kW thru-hull 50/200 kHz depth/temp with 15/21° 3/5° array beamwidths and high speed fairing block -12 m	€ 679.00
000-0106-82	0 42194 52414 6	B260 Bronze 1kW thru-hull 50/200 kHz depth/temp with 19/6° beamwidths and high speed fairing block -12m	€ 1,149.00
000-0106-91	0 42194 52455 9	M260 Plastic 1kW in-hull 50/200 kHz depth only tank kit with 19/6° beamwidths - 12m	€ 999.00
22098552	0 42194 90148 0	DST-800 Palstic retractable Thru-hull 235kHz transducer Depth/Speed/Temp - 2m	#N/A
000-10116-001	9420024107959	TM260 Plastic Transom Mount 50/200Khz 1kW Depth/Temp w 19/6° Beamwidths - 12m	€ 999.00
000-10247-001	9420024108482	B164 Bronze Low Profile Thru Hull 1kW 50/200Khz Depth/Temp w 22/20° 6/6° Array Beamwidths and 20° tilt - 12m	€ 899.00
Mounting Brackets And Flushmount Kits			
000-0113-20	0 42194 52228 9	FM-6 - Flush mount kit for X-50DS, X-67c, M-52, M-68c	€ 16.32
000-0051-52	0 42194 50250 2	Suction Cup Kit - Suction cup kit for portable skimmer transducers	€ 16.32
000-10030-001	0 42194 53505 0	PPP-17 - Elite/Mark portable power pack for 5" models with Suction cup transducer	€ 99.00
000-10209-001	0 42194 53570 8	PPP-18I -Elite/Mark Icefish bag with transducer	€ 149.00
000-10427-001	942002411109 3	Battery charger AC adptor for Ice fishing kit	€ 29.95
Performance Mounts			
000-0101-63	7 93442 00111 6	MB-8 - RAM 1-1/2" ball mounting bracket with 8" arm for 5"-8" units	€ 50.00
000-0124-74	0 42194 53365 0	MB-35 - RAM swing arm mounting bracket for 5"-8" units	€ 61.20
000-0124-75	0 42194 53366 7	MB-36 - RAM heavy duty 2-1/4" ball mounting bracket with short arm for 10" units	€ 102.00
000-0124-76	0 42194 53367 4	MB-37 - RAM 1-1/2" ball mounting bracket with standard arm for 10" units	€ 61.20
000-0124-77	0 42194 53368 1	MB-38 - RAM swing arm mounting bracket for 10" units	€ 100.00
000-0051-83	0 42194 50312 7	GBSA-1 - Swivel mount adapter for use with GB-13, GB-14, GB-19	€ 16.32
000-0113-26	0 42194 52280 7	GBSA-3- Swivel mount adapter for use with GB-17	€ 18.36

Accessories - Compatible with select Legacy Lowrance products

Part Number	Barcode	Description	RRP
Power and Adapter Cables			
000-0119-31	0 42194 52738 3	NDC-4 - NMEA-0183 output cable for M-52, M-68c	€ 20.40
000-0099-44	0 42194 51718 6	AC-CAF - AC power adapter to female cigarette lighter socket for power from 120V wall socket	€ 35.00
000-0119-10	0 42194 52469 6	CA-8 - Cigarette plug power cable for GlobalMap 3300C, GlobalMap 3500C, GlobalMap 3600C iGPS, GlobalMap 4800, GlobalMap 4900M, GlobalMap 5200C, GlobalMap 5300C iGPS, GlobalMap 5500C, GlobalMap 6500C, GlobalMap 6600C HD, GlobalMap 7200C, GlobalMap 7300C HD, GlobalMap 7500C, GlobalMap 7600C HD, GlobalMap 8200C, GlobalMap 8300C HD, GlobalMap 9200C, GlobalMap 9300C HD, GlobalMap Baja, LCX-110C, LCX-111C HD, LCX-17M, LCX-20C, LCX-25C, LCX-26C HD, LMS-330C, LMS-332C, LMS-335C DF, LMS-337C DF, LMS-480	€ 48.96
Transducer Extension Cables			
000-0099-91	0 42194 52291 3	XT-15U - 15ft uniplug extension cable	€ 26.00
000-0099-94	0 42194 52424 5	XT-20BL - 20' transducer extension cable (50 kHz or 200 kHz) for HDS-10, HDS-5, HDS-5x, HDS-7, HDS-8, LCX-110C, LCX-111C HD, LCX-112C, LCX-113C HD, LCX-17M, LCX-20C, LCX-25C, LCX-26C HD, LCX-27C, LCX-28C HD, LCX-37C, LCX-38C HD, LMS-332C, LMS-334C iGPS, LMS-480, LMS-520C, LMS-522C iGPS, X102C, X125, X135, X-510C, X52	€ 40.80
Transducer Switch Boxes			
000-0046-26	0 42194 52426 9	SB-9BL - Switch box to connect 2 blue connector transducers to one sonar unit for HDS-10, HDS-5, HDS-5x, HDS-7, HDS-8, LCX-110C, LCX-111C HD, LCX-112C, LCX-113C HD, LCX-17M, LCX-20C, LCX-25C, LCX-26C HD, LCX-27C, LCX-28C HD, LCX-37C, LCX-38C HD, LMS-332C, LMS-334C iGPS, LMS-480, LMS-520C, LMS-522C iGPS, X102C, X125, X135, X-510C, X52	€ 130.00

Spare Parts

Part Number	Barcode	Description	RRP
Sensors and Transducers			
000-0106-49	0 42194 52199 2	HST-50/200-WSU - 50/200 kHz transom mount skimmer with uniplug connector	€ 100.98
000-0106-94	0 42194 52711 6	PTI-WBL - Ice transducer with blue connector	€ 81.60
000-0106-68	0 42194 52279 1	PTI-WSU - Ice transducer with uniplug connector	€ 91.80
000-0127-50	0 42194 53354 4	FUSE-1 - 3 amp fuses (set of 3)	€ 15.30
000-10392-001	0 42194 53606 4	50/200kHz Skimmer™ transducer mounting kit	€ 12.24
Mounting Brackets and Flushmount Kits			
000-0099-06	0 42194 50499 5	HS-WS-SS Mtg Kit - Mounting kit for transom mount 83/200 kHz skimmer transducers	€ 16.32
000-0113-16	0 42194 52195 4	GB-17 - Gimbal bracket for X-50DS, X-67c, M-52, M-68c	€ 24.00
000-0101-99	0 42194 52103 9	GB-14 - Gimbal bracket for X-96, X-125, X-135, X-136DF	€ 20.40
000-0113-75	0 42194 52714 7	GB-18 Gimbal bracket for LCX, GlobalMap 7/8/10"	€ 46.00
000-0051-81	0 42194 50310 3	GK-8 - Bracket knobs for pre-2009 products	€ 20.40
000-0101-80	0 42194 52031 5	GK-9 - Bracket knobs for all Lowrance 5"excluding HDS	€ 20.40

Accessories - Compatible with select Legacy Lowrance products

Part Number	Barcode	Description	RRP
Cables and Connectors			
000-0099-83	0 42194 52227 2	PC-24U - Power cable for X-50DS, X-67c, M-68c, X-96	€ 20.40
000-0127-54	0 42194 53370 4	PC-31BLN - Power cable for BSM-1, LBS-1	€ 39.60
000-0127-41	0 42194 53262 2	PAC-9 AC adaptor for Endura and XOG	€ 25.50
000-0127-08	0 42194 53052 9	PC-27BL - Power cable for HDS-10, HDS-5, HDS-5x, HDS-7, HDS-8, LCX-110C, LCX-111C HD, LCX-112C, LCX-113C HD, LCX-17M, LCX-20C, LCX-25C, LCX-26C HD, LCX-27C, LCX-28C HD, LCX-37C, LCX-38C HD, LMS-332C, LMS-334C iGPS, LMS-480, LMS-520C, LMS-522C iGPS, X102C, X125, X135, X-510C, X52	€ 40.80
000-0127-52	0 42194 53357 5	TR-120-KIT - Set of 1 male and 1 female NMEA 2000® terminators	€ 15.30

LOWRANCE®

www.lowrance.com
